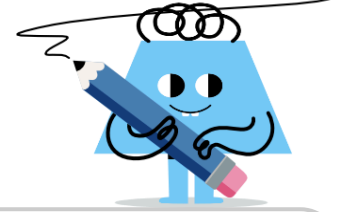




Factorial Multiplication String To Factorial



1 Select the correct factorial equivalent to this multiplication

$$6 \cdot 5 \cdot 4 \cdot 3 \cdot 2$$

A	B	C	D
4!	5!	6!	7!

2 Select the correct factorial equivalent to this multiplication

$$5 \cdot 4 \cdot 3 \cdot 2$$

A	B	C	D
7!	4!	6!	5!

3 Select the correct factorial equivalent to this multiplication

$$4 \cdot 3 \cdot 2$$

A	B	C
2!	4!	6!
D		
5!		