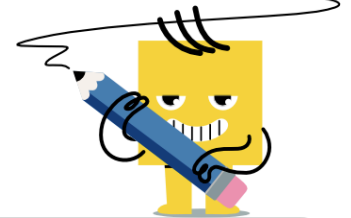




Factorials - To Multiplication String



<p>1 Select the correct equivalent to this factorial</p> $\frac{1}{4!}$	<p>A $\frac{1}{5 \cdot 4 \cdot 3}$</p>	<p>B $\frac{1}{4 \cdot 3 \cdot 2}$</p>	<p>C 2</p>	<p>2 Select the correct equivalent to this factorial</p> $\frac{1}{2!}$	<p>A $3 \cdot 2$</p>	<p>B 1</p>	<p>C $\frac{1}{4}$</p>
	<p>D $\frac{1}{3}$</p>				<p>D $\frac{1}{2}$</p>	<p>E $4 \cdot 3 \cdot 2$</p>	
<p>3 Select the correct equivalent to this factorial</p> $\frac{1}{5!}$	<p>A $\frac{1}{5 \cdot 4 \cdot 3 \cdot 2}$</p>	<p>B $\frac{1}{4 \cdot 3 \cdot 2}$</p>	<p>4 Select the correct equivalent to this factorial</p> $6!$	<p>A $\frac{1}{7 \cdot 6 \cdot 5 \cdot 4 \cdot 3}$</p>	<p>B $\frac{1}{8 \cdot 7 \cdot 6 \cdot 5 \cdot 4}$</p>		
	<p>C $\frac{1}{3 \cdot 2}$</p>	<p>D $\frac{1}{6 \cdot 5 \cdot 4 \cdot 3 \cdot 2}$</p>		<p>C $6 \cdot 5 \cdot 4 \cdot 3 \cdot 2$</p>	<p>D $5 \cdot 4 \cdot 3 \cdot 2$</p>		
	<p>E $\frac{1}{5 \cdot 4 \cdot 3}$</p>			<p>E $7 \cdot 6 \cdot 5 \cdot 4 \cdot 3 \cdot 2$</p>			
<p>5 Select the correct equivalent to this factorial</p> $5!$	<p>A $5 \cdot 4 \cdot 3 \cdot 2$</p>	<p>B $5 \cdot 4$</p>	<p>6 Select the correct equivalent to this factorial</p> $\frac{1}{6!}$	<p>A $\frac{1}{4 \cdot 3}$</p>	<p>B $\frac{1}{8 \cdot 7 \cdot 6 \cdot 5 \cdot 4 \cdot 3}$</p>		
	<p>C $6 \cdot 5 \cdot 4 \cdot 3 \cdot 2$</p>	<p>D $3 \cdot 2$</p>		<p>C $7 \cdot 6 \cdot 5 \cdot 4 \cdot 3 \cdot 2$</p>	<p>D $\frac{1}{6 \cdot 5 \cdot 4 \cdot 3 \cdot 2}$</p>		
	<p>E $7 \cdot 6 \cdot 5 \cdot 4 \cdot 3 \cdot 2$</p>			<p>E $\frac{1}{6 \cdot 5 \cdot 4}$</p>			
<p>7 Select the correct equivalent to this factorial</p> $\frac{1}{3!}$	<p>A $3 \cdot 2$</p>	<p>B $\frac{1}{5 \cdot 4}$</p>					
	<p>C $5 \cdot 4 \cdot 3 \cdot 2$</p>	<p>D $\frac{1}{5 \cdot 4 \cdot 3 \cdot 2}$</p>					
	<p>E $\frac{1}{3 \cdot 2}$</p>						