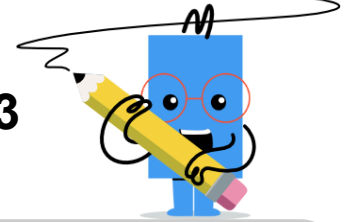
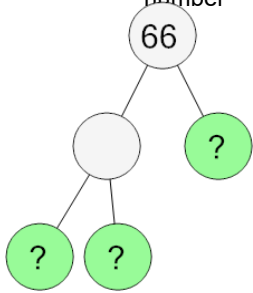




Prime Factorization - Factor Tree with 3 Factors - Full

**1**

Finish the factor tree to find the prime factorization of this number



A $2 \times 3 \times 7 \times 11$

B $2 \times 2 \times 3 \times 11$

C $2 \times 3 \times 5 \times 11$

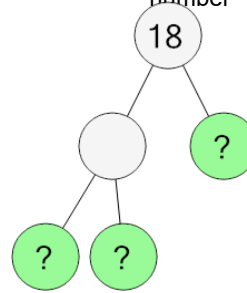
D $2 \times 3 \times 11 \times 13$

E $2 \times 3 \times 11$

F $2 \times 3 \times 3 \times 11$

2

Finish the factor tree to find the prime factorization of this number



A $2 \times 3 \times 3$

B $2 \times 3 \times 3 \times 5$

C $2 \times 3 \times 3 \times 13$

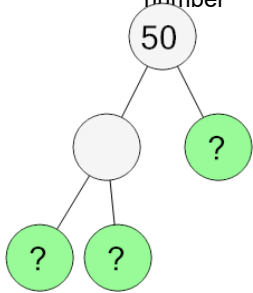
D $2 \times 2 \times 3 \times 3$

E $2 \times 3 \times 3 \times 11$

F $2 \times 3 \times 3 \times 3$

3

Finish the factor tree to find the prime factorization of this number



A $2 \times 5 \times 5 \times 13$

B $2 \times 5 \times 5$

C $2 \times 2 \times 5 \times 5$

D $2 \times 5 \times 5 \times 7$

E $2 \times 3 \times 5 \times 5$

F $2 \times 5 \times 5 \times 11$