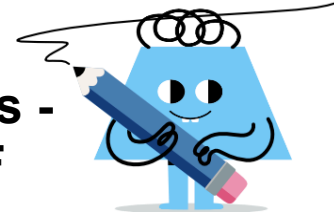
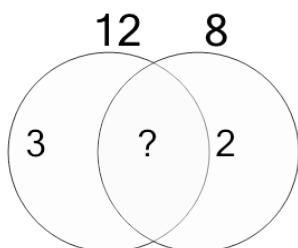




Factoring - Venn Diagrams - 2 Numbers - Populated Venn without Center to GCF

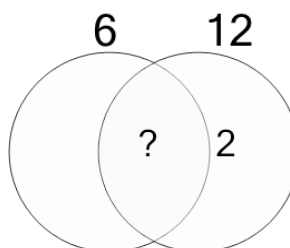


1 Complete the factor diagram and find the GCF of these numbers.



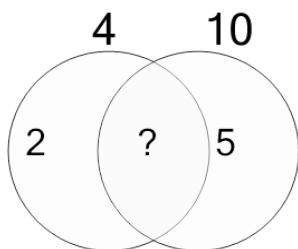
| A | B | C |
|----|---|----|
| 14 | 4 | 6 |
| D | E | F |
| 2 | 1 | 18 |

2 Complete the factor diagram and find the GCF of these numbers.



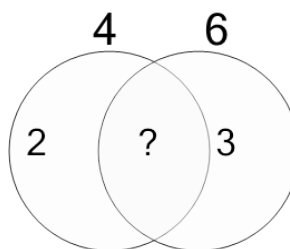
| A | B | C |
|---|----|----|
| 5 | 2 | 25 |
| D | E | F |
| 6 | 10 | 29 |

3 Complete the factor diagram and find the GCF of these numbers.



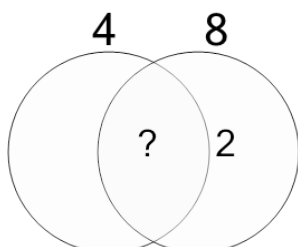
| A | B | C |
|----|----|---|
| 2 | 13 | 4 |
| D | E | F |
| 10 | 1 | 3 |

4 Complete the factor diagram and find the GCF of these numbers.



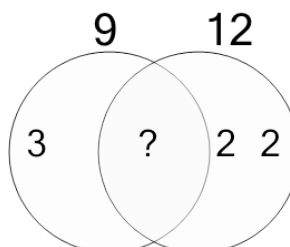
| A | B | C |
|---|---|---|
| 4 | 2 | 1 |
| D | E | F |
| 3 | 8 | 5 |

5 Complete the factor diagram and find the GCF of these numbers.



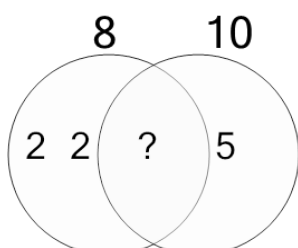
| A | B | C |
|----|---|---|
| 5 | 4 | 1 |
| D | E | F |
| 24 | 3 | 7 |

6 Complete the factor diagram and find the GCF of these numbers.



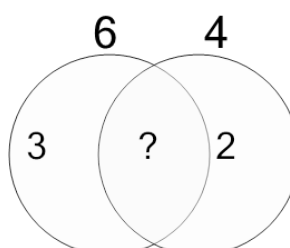
| A | B | C |
|----|---|---|
| 22 | 2 | 6 |
| D | E | F |
| 16 | 3 | 1 |

7 Complete the factor diagram and find the GCF of these numbers.



| A | B | C |
|----|---|---|
| 6 | 3 | 2 |
| D | E | F |
| 12 | 5 | 1 |

8 Complete the factor diagram and find the GCF of these numbers.



| A | B | C |
|---|----|---|
| 9 | 14 | 4 |
| D | E | F |
| 1 | 5 | 2 |