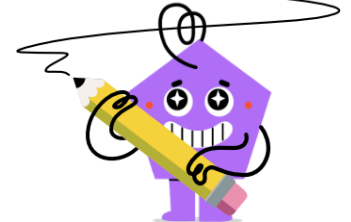




## Fraction Conversion - To Mixed - From Image



**1** Make this fraction into a mixed number



$$\frac{8}{3} = ? \frac{?}{?}$$

A  $2 \frac{1}{4}$

B  $3 \frac{1}{4}$

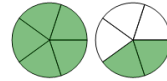
C  $3 \frac{3}{8}$

D  $2 \frac{2}{3}$

E  $8 \frac{1}{3}$

F  $1 \frac{5}{7}$

**2** Make this fraction into a mixed number



$$\frac{7}{5} = ? \frac{?}{?}$$

A  $7 \frac{1}{5}$

B  $1 \frac{2}{5}$

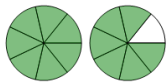
C  $1 \frac{2}{6}$

D  $5 \frac{1}{4}$

E  $1 \frac{2}{9}$

F  $5 \frac{5}{7}$

**3** Make this fraction into a mixed number



$$\frac{13}{7} = ? \frac{?}{?}$$

A  $7 \frac{1}{13}$

B  $1 \frac{6}{7}$

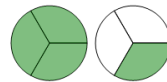
C  $13 \frac{1}{7}$

D  $1 \frac{6}{11}$

E  $7 \frac{1}{4}$

F  $1 \frac{6}{8}$

**4** Make this fraction into a mixed number



$$\frac{4}{3} = ? \frac{?}{?}$$

A  $1 \frac{1}{4}$

B  $3 \frac{3}{4}$

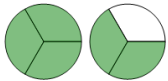
C  $1 \frac{1}{3}$

D  $3 \frac{1}{4}$

E  $4 \frac{1}{3}$

F  $1 \frac{1}{7}$

**5** Make this fraction into a mixed number



$$\frac{5}{3} = ? \frac{?}{?}$$

A  $3 \frac{2}{5}$

B  $1 \frac{2}{3}$

C  $1 \frac{2}{4}$

D  $3 \frac{1}{4}$

E  $5 \frac{1}{3}$

F  $1 \frac{2}{7}$

**6** Make this fraction into a mixed number



$$\frac{5}{2} = ? \frac{?}{?}$$

A  $5 \frac{1}{2}$

B  $2 \frac{2}{5}$

C  $2 \frac{1}{4}$

D  $2$

E  $2 \frac{1}{2}$

F  $1 \frac{3}{6}$

**7** Make this fraction into a mixed number



$$\frac{8}{5} = ? \frac{?}{?}$$

A  $1 \frac{3}{6}$

B  $1 \frac{3}{9}$

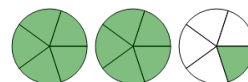
C  $1 \frac{3}{5}$

D  $8 \frac{1}{5}$

E  $5 \frac{5}{8}$

F  $5 \frac{1}{4}$

**8** Make this fraction into a mixed number



$$\frac{11}{5} = ? \frac{?}{?}$$

A  $11 \frac{1}{5}$

B  $2$

C  $5 \frac{5}{11}$

D  $5 \frac{1}{4}$

E  $1 \frac{6}{9}$

F  $2 \frac{1}{5}$