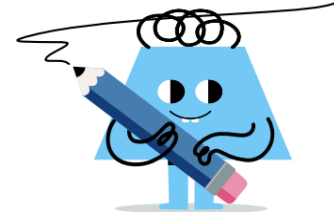




Fraction Conversion - To Mixed, Just Wholes - From Image

**1**

Find the number of wholes when this is made into a mixed fraction



$$\frac{14}{5} = ? \frac{4}{5}$$

A

3

B

4

C

0

D

2

E

5

F

1

2

Find the number of wholes when this is made into a mixed fraction



$$\frac{8}{7} = ? \frac{1}{7}$$

A

2

B

1

C

4

D

0

E

3

3

Find the number of wholes when this is made into a mixed fraction



$$\frac{13}{5} = ? \frac{3}{5}$$

A

4

B

1

C

3

D

0

E

5

F

2

4

Find the number of wholes when this is made into a mixed fraction



$$\frac{6}{5} = ? \frac{1}{5}$$

A

4

B

1

C

3

D

2

E

0

5

Find the number of wholes when this is made into a mixed fraction



$$\frac{22}{9} = ? \frac{4}{9}$$

A

0

B

1

C

3

D

5

E

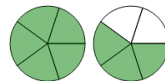
4

F

2

6

Find the number of wholes when this is made into a mixed fraction



$$\frac{8}{5} = ? \frac{3}{5}$$

A

4

B

2

C

3

D

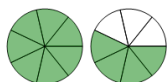
1

E

0

7

Find the number of wholes when this is made into a mixed fraction



$$\frac{11}{7} = ? \frac{4}{7}$$

A

2

B

3

C

1

D

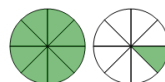
4

E

0

8

Find the number of wholes when this is made into a mixed fraction



$$\frac{9}{8} = ? \frac{1}{8}$$

A

4

B

3

C

1

D

0

E

2