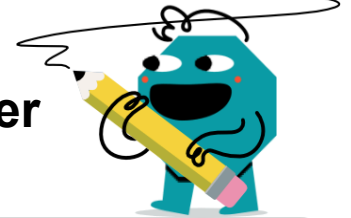




Fraction Division As Fraction - Improper



1 Divide these fractions and simplify the answer

$$\left(\frac{\frac{6}{4}}{\frac{3}{8}} \right)$$

A $1\frac{1}{6}$

B 2

C 4

D $4\frac{2}{3}$

E $3\frac{1}{2}$

F $\frac{9}{16}$

2 Divide these fractions and simplify the answer

$$\left(\frac{\frac{9}{2}}{\frac{3}{4}} \right)$$

A $2\frac{1}{6}$

B $2\frac{3}{5}$

C $6\frac{1}{2}$

D $4\frac{1}{3}$

E $3\frac{3}{8}$

F 6

3 Divide these fractions and simplify the answer

$$\left(\frac{\frac{2}{7}}{\frac{6}{5}} \right)$$

A $\frac{5}{21}$

B $\frac{12}{35}$

C 1

D $\frac{1}{6}$

E $\frac{7}{13}$

F $1\frac{1}{6}$

4 Divide these fractions and simplify the answer

$$\left(\frac{\frac{9}{2}}{\frac{1}{8}} \right)$$

A $8\frac{1}{2}$

B $\frac{9}{16}$

C 17

D 36

E $5\frac{2}{3}$

F

5 Divide these fractions and simplify the answer

$$\left(\frac{\frac{8}{4}}{\frac{1}{4}} \right)$$

A $2\frac{2}{5}$

B $\frac{1}{2}$

C 8

D 3

E 12

F

6 Divide these fractions and simplify the answer

$$\left(\frac{\frac{1}{6}}{\frac{7}{2}} \right)$$

A $\frac{7}{12}$

B $\frac{1}{21}$

C $\frac{3}{7}$

D $\frac{1}{2}$

E $\frac{3}{13}$

F $\frac{1}{14}$

7 Divide these fractions and simplify the answer

$$\left(\frac{\frac{7}{8}}{\frac{9}{8}} \right)$$

A $\frac{63}{64}$

B $\frac{15}{17}$

C $1\frac{2}{3}$

D $\frac{7}{9}$

E $1\frac{7}{8}$

F $\frac{5}{24}$

8 Divide these fractions and simplify the answer

$$\left(\frac{\frac{4}{5}}{\frac{8}{5}} \right)$$

A $1\frac{4}{5}$

B $\frac{1}{2}$

C $\frac{9}{40}$

D $\frac{9}{13}$

E $1\frac{1}{8}$

F $1\frac{7}{25}$