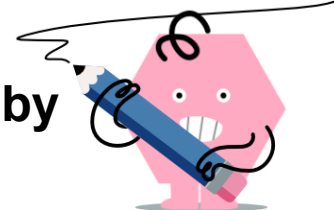




Fraction Division As Fraction - Simple by Whole - Don't Simplify



1 Divide these fractions (don't simplify the answer) $\left(\frac{1}{5}\right) \div (2)$	A $\frac{2}{5}$ B $\frac{1}{10}$ C $\frac{2}{10}$ D $\frac{2}{7}$ E $\frac{2}{2}$	2 Divide these fractions (don't simplify the answer) $\left(\frac{1}{4}\right) \div (2)$	A $\frac{2}{6}$ B $\frac{2}{2}$ C $\frac{2}{8}$ D $\frac{2}{4}$ E $\frac{1}{8}$
3 Divide these fractions (don't simplify the answer) $\left(\frac{1}{2}\right) \div (4)$	A $\frac{4}{2}$ B $\frac{2}{2}$ C $\frac{1}{8}$ D $\frac{2}{4}$ E $\frac{2}{6}$ F $\frac{2}{8}$	4 Divide these fractions (don't simplify the answer) $\left(\frac{1}{6}\right) \div (2)$	A $\frac{2}{6}$ B $\frac{2}{12}$ C $\frac{2}{2}$ D $\frac{1}{12}$ E $\frac{2}{8}$
5 Divide these fractions (don't simplify the answer) $\left(\frac{1}{2}\right) \div (2)$	A $\frac{1}{4}$ B $\frac{2}{2}$ C $\frac{2}{4}$	6 Divide these fractions (don't simplify the answer) $\left(\frac{1}{4}\right) \div (3)$	A $\frac{3}{4}$ B $\frac{1}{12}$ C $\frac{2}{3}$ D $\frac{2}{7}$ E $\frac{2}{4}$ F $\frac{2}{12}$
7 Divide these fractions (don't simplify the answer) $\left(\frac{1}{6}\right) \div (3)$	A $\frac{1}{18}$ B $\frac{2}{18}$ C $\frac{2}{6}$ D $\frac{2}{3}$ E $\frac{3}{6}$ F $\frac{2}{9}$	8 Divide these fractions (don't simplify the answer) $\left(\frac{1}{6}\right) \div (4)$	A $\frac{1}{24}$ B $\frac{2}{10}$ C $\frac{2}{6}$ D $\frac{2}{24}$ E $\frac{4}{6}$ F $\frac{2}{4}$