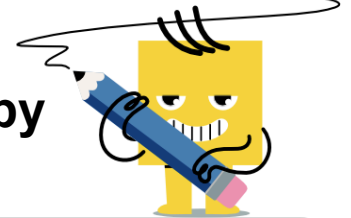




Fraction Division As Fraction - Whole by Improper



1

Divide these fractions and simplify the answer

$$\frac{(3)}{(\frac{7}{2})}$$

A

$$\frac{6}{7}$$

B

$$5$$

C

$$\frac{5}{8}$$

2

Divide these fractions and simplify the answer

$$\frac{(2)}{(\frac{9}{4})}$$

A

$$6$$

B

$$\frac{2}{3}$$

C

$$\frac{3}{5}$$

3

Divide these fractions and simplify the answer

$$\frac{(3)}{(\frac{8}{2})}$$

A

$$\frac{5}{8}$$

B

$$\frac{5}{9}$$

C

$$12$$

4

Divide these fractions and simplify the answer

$$\frac{(2)}{(\frac{9}{2})}$$

A

$$4$$

B

$$\frac{2}{5}$$

C

$$9$$

5

Divide these fractions and simplify the answer

$$\frac{(2)}{(\frac{8}{2})}$$

A

$$4$$

B

$$\frac{1}{2}$$

C

$$8$$

6

Divide these fractions and simplify the answer

$$\frac{(2)}{(\frac{6}{2})}$$

A

$$\frac{2}{3}$$

B

$$\frac{4}{7}$$

C

$$6$$

7

Divide these fractions and simplify the answer

$$\frac{(2)}{(\frac{5}{2})}$$

A

$$\frac{4}{5}$$

B

$$\frac{2}{3}$$

C

$$5$$

8

Divide these fractions and simplify the answer

$$\frac{(4)}{(\frac{9}{2})}$$

A

$$\frac{8}{9}$$

B

$$\frac{3}{5}$$

C

$$\frac{2}{3}$$

D

$$18$$

E

$$6$$