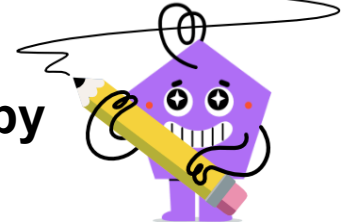




Fraction Division As Fraction - Whole by Simple



1

Divide these fractions and simplify the answer

$$\frac{(4)}{(\frac{1}{2})}$$

A

8

B

3

C

2

D

6

2

Divide these fractions and simplify the answer

$$\frac{(4)}{(\frac{1}{6})}$$

A

$2\frac{2}{3}$

B

10

C

5

D

24

3

Divide these fractions and simplify the answer

$$\frac{(4)}{(\frac{1}{3})}$$

A

$1\frac{1}{3}$

B

12

C

7

D

$3\frac{1}{2}$

4

Divide these fractions and simplify the answer

$$\frac{(2)}{(\frac{1}{2})}$$

A

2

B

4

C

1

5

Divide these fractions and simplify the answer

$$\frac{(3)}{(\frac{1}{6})}$$

A

9

B

$1\frac{1}{2}$

C

$4\frac{1}{2}$

D

18

6

Divide these fractions and simplify the answer

$$\frac{(4)}{(\frac{1}{5})}$$

A

$4\frac{1}{2}$

B

9

C

$4\frac{4}{5}$

D

20

7

Divide these fractions and simplify the answer

$$\frac{(2)}{(\frac{1}{6})}$$

A

4

B

12

C

$1\frac{1}{3}$

D

8

8

Divide these fractions and simplify the answer

$$\frac{(2)}{(\frac{1}{3})}$$

A

$2\frac{1}{2}$

B

5

C

6

D

$2\frac{2}{3}$