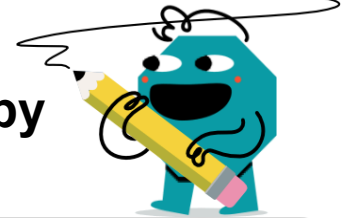




Fraction Division As Fraction - Whole by Simple



1

Divide these fractions and simplify the answer

$$\frac{(2)}{(\frac{4}{6})}$$

A

2

B

8

C

$1\frac{1}{3}$

D

3

E

$1\frac{3}{5}$

2

Divide these fractions and simplify the answer

$$\frac{(3)}{(\frac{1}{9})}$$

A

27

B

12

C

6

D

$\frac{1}{3}$

3

Divide these fractions and simplify the answer

$$\frac{(2)}{(\frac{2}{5})}$$

A

$\frac{4}{5}$

B

$2\frac{1}{3}$

C

7

D

$3\frac{1}{2}$

E

5

4

Divide these fractions and simplify the answer

$$\frac{(2)}{(\frac{3}{6})}$$

A

$2\frac{2}{3}$

B

2

C

8

D

4

E

1

5

Divide these fractions and simplify the answer

$$\frac{(2)}{(\frac{4}{5})}$$

A

$2\frac{1}{2}$

B

$1\frac{2}{5}$

C

$1\frac{3}{5}$

D

7

E

$1\frac{3}{4}$

6

Divide these fractions and simplify the answer

$$\frac{(2)}{(\frac{1}{7})}$$

A

$4\frac{1}{2}$

B

14

C

9

D

$\frac{2}{7}$

7

Divide these fractions and simplify the answer

$$\frac{(3)}{(\frac{2}{6})}$$

A

$4\frac{1}{2}$

B

9

C

3

D

1

8

Divide these fractions and simplify the answer

$$\frac{(4)}{(\frac{3}{4})}$$

A

3

B

8

C

$5\frac{1}{3}$

D

2

E

$2\frac{2}{3}$