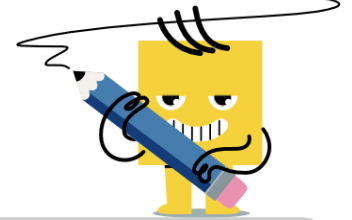




Fraction Division - Mixed



1 Divide these fractions and simplify the answer

$$1\frac{2}{5} \div 3\frac{1}{2}$$

A $1\frac{4}{5}$

B $2\frac{2}{5}$

C $1\frac{2}{7}$

D $\frac{9}{35}$

E $\frac{3}{4}$

F $4\frac{9}{10}$

2 Divide these fractions and simplify the answer

$$1\frac{4}{5} \div 2\frac{1}{4}$$

A $4\frac{1}{20}$

B $\frac{4}{5}$

C $2\frac{3}{5}$

D $\frac{13}{45}$

E $\frac{13}{14}$

F $1\frac{4}{9}$

3 Divide these fractions and simplify the answer

$$2 \div 2\frac{2}{3}$$

A $3\frac{1}{2}$

B $\frac{3}{4}$

C $\frac{7}{16}$

D $5\frac{1}{3}$

E $\frac{7}{8}$

F $\frac{7}{10}$

4 Divide these fractions and simplify the answer

$$1\frac{2}{7} \div 1\frac{1}{2}$$

A $3\frac{2}{3}$

B $1\frac{13}{14}$

C $\frac{6}{7}$

D $1\frac{4}{7}$

E $\frac{11}{21}$

F $1\frac{1}{10}$

5 Divide these fractions and simplify the answer

$$3 \div 1\frac{2}{6}$$

A $1\frac{1}{2}$

B $2\frac{1}{4}$

C 6

D $\frac{3}{4}$

E 4

F $1\frac{1}{5}$

6 Divide these fractions and simplify the answer

$$2\frac{1}{3} \div 1\frac{3}{6}$$

A $4\frac{1}{3}$

B $1\frac{1}{12}$

C $3\frac{1}{2}$

D $1\frac{5}{9}$

E $\frac{13}{27}$

F $1\frac{4}{9}$

7 Divide these fractions and simplify the answer

$$1\frac{1}{7} \div 1\frac{1}{3}$$

A $2\frac{3}{4}$

B $1\frac{4}{7}$

C $1\frac{11}{21}$

D $\frac{11}{28}$

E 1

F $\frac{6}{7}$

8 Divide these fractions and simplify the answer

$$2 \div 1\frac{1}{3}$$

A $1\frac{1}{2}$

B $\frac{7}{8}$

C $1\frac{1}{6}$

D $3\frac{1}{2}$

E $1\frac{3}{4}$

F $2\frac{2}{3}$