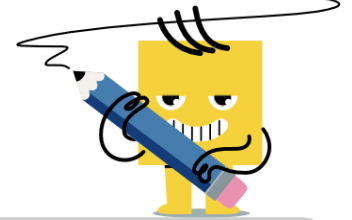




Fraction Division - Simple



1 Divide these fractions and simplify the answer

$$\frac{1}{5} \div \frac{2}{9}$$

A $\frac{2}{45}$

B $\frac{9}{10}$

C $1\frac{3}{7}$

D 1

E 2

F 5

2 Divide these fractions and simplify the answer

$$\frac{4}{3} \div \frac{1}{6}$$

A $2\frac{1}{2}$

B $3\frac{1}{3}$

C $\frac{2}{9}$

D 10

E 8

3 Divide these fractions and simplify the answer

$$\frac{3}{8} \div \frac{1}{8}$$

A $\frac{3}{64}$

B 3

C 11

D $1\frac{2}{9}$

E $1\frac{3}{8}$

4 Divide these fractions and simplify the answer

$$\frac{7}{2} \div \frac{1}{8}$$

A $7\frac{1}{2}$

B $\frac{7}{16}$

C 28

D 5

E 15

5 Divide these fractions and simplify the answer

$$\frac{3}{5} \div \frac{1}{8}$$

A $2\frac{1}{5}$

B $\frac{3}{40}$

C $1\frac{5}{6}$

D 11

E $4\frac{4}{5}$

6 Divide these fractions and simplify the answer

$$\frac{1}{7} \div \frac{3}{8}$$

A 3

B $\frac{3}{56}$

C $\frac{3}{7}$

D $\frac{9}{10}$

E $1\frac{2}{7}$

F $\frac{8}{21}$

7 Divide these fractions and simplify the answer

$$\frac{7}{3} \div \frac{1}{6}$$

A 13

B $3\frac{1}{4}$

C $\frac{7}{18}$

D $4\frac{1}{3}$

E 14

8 Divide these fractions and simplify the answer

$$\frac{2}{3} \div \frac{1}{6}$$

A 2

B 8

C $2\frac{2}{3}$

D $\frac{1}{9}$

E 4