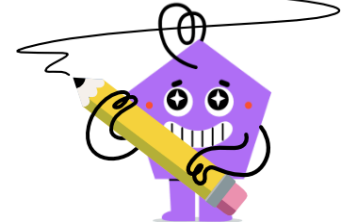




Fraction Division - Whole by Improper



1 Divide these fractions and simplify the answer

$$4 \div \frac{6}{4}$$

A $1\frac{1}{7}$

B 6

C $1\frac{1}{3}$

D 8

E $2\frac{2}{3}$

2 Divide these fractions and simplify the answer

$$3 \div \frac{6}{3}$$

A 6

B 1

C $\frac{6}{7}$

D $1\frac{1}{2}$

3 Divide these fractions and simplify the answer

$$4 \div \frac{6}{5}$$

A $1\frac{2}{7}$

B 9

C $1\frac{1}{2}$

D $4\frac{4}{5}$

E $3\frac{1}{3}$

4 Divide these fractions and simplify the answer

$$3 \div \frac{9}{6}$$

A 9

B 1

C $\frac{9}{10}$

D 2

E $4\frac{1}{2}$

5 Divide these fractions and simplify the answer

$$4 \div \frac{9}{6}$$

A 6

B $1\frac{1}{9}$

C 1

D 10

E $2\frac{2}{3}$

6 Divide these fractions and simplify the answer

$$4 \div \frac{6}{3}$$

A 7

B 2

C 1

D $1\frac{1}{6}$

E 8

7 Divide these fractions and simplify the answer

$$4 \div \frac{4}{3}$$

A $1\frac{3}{4}$

B $5\frac{1}{3}$

C 3

D 7

E $1\frac{2}{5}$

8 Divide these fractions and simplify the answer

$$4 \div \frac{7}{4}$$

A $1\frac{1}{7}$

B 8

C 1

D $2\frac{2}{7}$

E 7