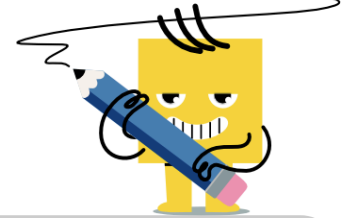




Fraction Division - Whole by Mixed



<p>1 Divide these fractions and simplify the answer</p> $3 \div \frac{1}{8}$	<p>A</p> 24	<p>B</p> $3\frac{3}{8}$	<p>C</p> 11	<p>2 Divide these fractions and simplify the answer</p> $2 \div \frac{5}{3}$	<p>A</p> $\frac{5}{6}$	<p>B</p> $3\frac{1}{3}$	<p>C</p> $1\frac{1}{5}$
	<p>D</p> $5\frac{1}{2}$				<p>D</p> 1	<p>E</p> 5	
<p>3 Divide these fractions and simplify the answer</p> $2 \div \frac{6}{3}$	<p>A</p> 5	<p>B</p> 1	<p>C</p> 4	<p>4 Divide these fractions and simplify the answer</p> $2 \div \frac{7}{3}$	<p>A</p> $4\frac{2}{3}$	<p>B</p> $\frac{6}{7}$	<p>C</p> $\frac{5}{8}$
	<p>D</p> $\frac{5}{6}$	<p>E</p> $\frac{5}{7}$			<p>D</p> 5	<p>E</p> $\frac{5}{7}$	
<p>5 Divide these fractions and simplify the answer</p> $2 \div \frac{7}{9}$	<p>A</p> $1\frac{4}{7}$	<p>B</p> $1\frac{3}{8}$	<p>C</p> $1\frac{5}{9}$	<p>6 Divide these fractions and simplify the answer</p> $3 \div \frac{5}{2}$	<p>A</p> $\frac{5}{6}$	<p>B</p> 5	<p>C</p> 1
	<p>D</p> $2\frac{4}{7}$	<p>E</p> 11			<p>D</p> $1\frac{1}{5}$	<p>E</p> $7\frac{1}{2}$	
<p>7 Divide these fractions and simplify the answer</p> $3 \div \frac{5}{6}$	<p>A</p> $1\frac{1}{2}$	<p>B</p> 9	<p>C</p> $2\frac{1}{2}$	<p>8 Divide these fractions and simplify the answer</p> $3 \div \frac{9}{3}$	<p>A</p> $\frac{2}{3}$	<p>B</p> 6	<p>C</p> 9
	<p>D</p> $3\frac{3}{5}$	<p>E</p> $1\frac{4}{5}$			<p>D</p> $\frac{3}{5}$	<p>E</p> 1	