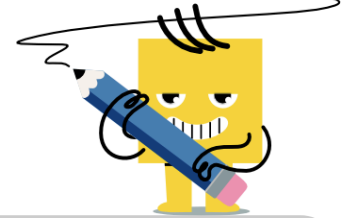




Fraction Division - Whole by Simple



1 Divide these fractions and simplify the answer

$$4 \div \frac{5}{6}$$

A $4\frac{4}{5}$

B $1\frac{2}{3}$

C 10

D 2

E $3\frac{1}{3}$

2 Divide these fractions and simplify the answer

$$3 \div \frac{3}{4}$$

A 4

B $2\frac{1}{3}$

C $1\frac{3}{4}$

D 7

E $2\frac{1}{4}$

3 Divide these fractions and simplify the answer

$$3 \div \frac{1}{7}$$

A 10

B 5

C 21

D $\frac{3}{7}$

4 Divide these fractions and simplify the answer

$$4 \div \frac{1}{7}$$

A 11

B $4\frac{4}{7}$

C 28

D $5\frac{1}{2}$

5 Divide these fractions and simplify the answer

$$4 \div \frac{1}{8}$$

A 32

B 12

C 6

D $\frac{1}{2}$

6 Divide these fractions and simplify the answer

$$3 \div \frac{4}{5}$$

A 2

B $3\frac{3}{4}$

C 8

D $1\frac{3}{5}$

E $2\frac{2}{5}$

7 Divide these fractions and simplify the answer

$$3 \div \frac{2}{4}$$

A $3\frac{1}{2}$

B $1\frac{1}{2}$

C $2\frac{1}{3}$

D 7

E 6

8 Divide these fractions and simplify the answer

$$2 \div \frac{1}{9}$$

A 18

B $5\frac{1}{2}$

C $\frac{2}{9}$

D 11