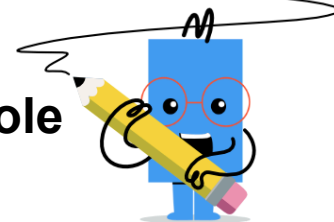
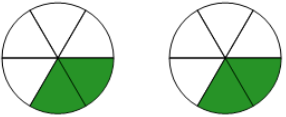
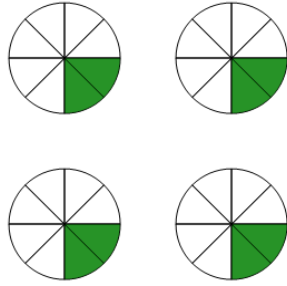
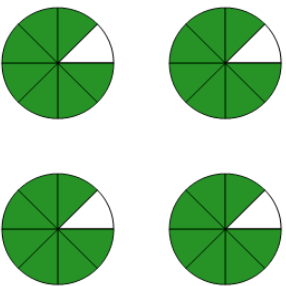
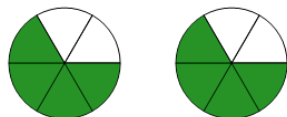
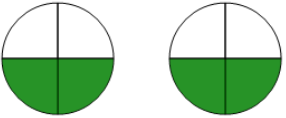
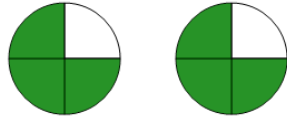
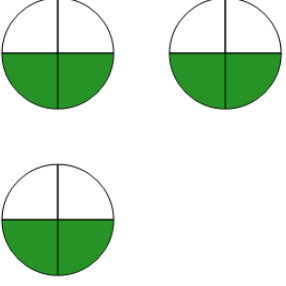
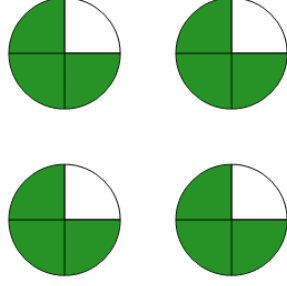




Fraction Multiplication - Simple by Whole Concept Intro - Picture to Equation



1 Find the multiplication equation that represents this picture 	A $2 \cdot \frac{2}{5}$	B $2 \times \frac{2}{6}$	C $2 \cdot \frac{3}{6}$	2 Find the multiplication equation that represents this picture 	A $3 \times \frac{2}{8}$	B $4 \cdot \frac{3}{8}$	C $4 \times \frac{2}{8}$
	D $3 \times \frac{2}{6}$				D $4 \cdot \frac{2}{7}$		
3 Find the multiplication equation that represents this picture 	A $4 \cdot \frac{5}{8}$	B $4 \times \frac{7}{8}$	C $4 \cdot \frac{7}{7}$	4 Find the multiplication equation that represents this picture 	A $2 \times \frac{4}{6}$	B $2 \cdot \frac{2}{6}$	C $3 \times \frac{4}{6}$
	D $3 \times \frac{7}{8}$				D $2 \cdot \frac{4}{5}$		
5 Find the multiplication equation that represents this picture 	A $2 \cdot \frac{3}{4}$	B $3 \times \frac{2}{4}$	C $2 \times \frac{2}{4}$	6 Find the multiplication equation that represents this picture 	A $3 \times \frac{3}{4}$	B $2 \cdot \frac{4}{4}$	C $2 \times \frac{3}{4}$
	D $2 \cdot \frac{2}{5}$				D $2 \cdot \frac{3}{5}$		
7 Find the multiplication equation that represents this picture 	A $2 \times \frac{2}{4}$	B $3 \times \frac{2}{4}$	C $3 \cdot \frac{2}{5}$	8 Find the multiplication equation that represents this picture 	A $4 \cdot \frac{4}{4}$	B $4 \times \frac{3}{4}$	C $3 \times \frac{3}{4}$
	D $3 \cdot \frac{3}{4}$				D $4 \cdot \frac{3}{5}$		