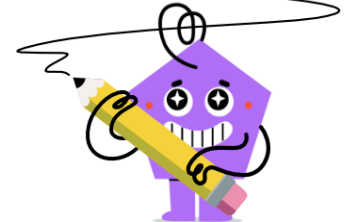




Fractions - Equivalent - Powers of Ten



1 Complete the equivalent fraction by finding the missing numerator

$$\frac{1}{4} = \frac{?}{40}$$

A	B	C
1,000	100	400
D	E	F
10	0	14

2 Complete the equivalent fraction by finding the missing denominator

$$\frac{1}{2} = \frac{10}{?}$$

A	B	C
2,000	1,000	200
D	E	F
100	20	0

3 Complete the equivalent fraction by finding the missing denominator

$$\frac{1}{6} = \frac{10}{?}$$

A	B	C
600	60	6,000
D	E	F
10	0	1,000

4 Complete the equivalent fraction by finding the missing denominator

$$\frac{1}{3} = \frac{10}{?}$$

A	B	C
300	1,000	0
D	E	F
30	10	280

5 Complete the equivalent fraction by finding the missing numerator

$$\frac{1}{2} = \frac{?}{20}$$

A	B	C
2,000	60	0
D	E	F
800	10	200

6 Complete the equivalent fraction by finding the missing denominator

$$\frac{1}{8} = \frac{10}{?}$$

A	B	C
8,000	80	1,000
D	E	F
100	0	7,600

7 Complete the equivalent fraction by finding the missing denominator

$$\frac{1}{4} = \frac{10}{?}$$

A	B	C
400	1,000	390
D	E	F
100	40	4,000

8 Complete the equivalent fraction by finding the missing numerator

$$\frac{1}{6} = \frac{?}{60}$$

A	B	C
100	10	0
D	E	F
13	600	1,000