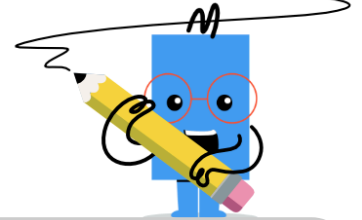


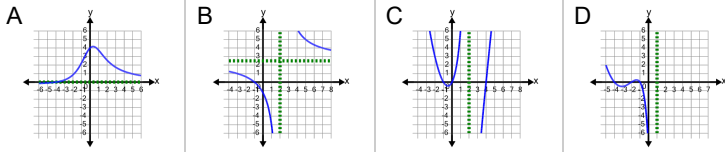


## Rational Functions and Asymptotes - Asymptote Types to Graph



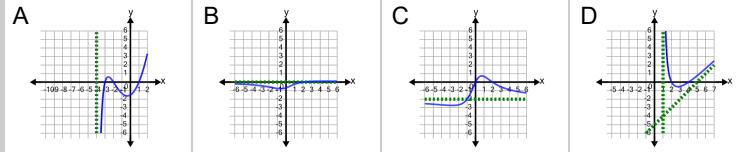
1 Horizontal asymptote (at zero)

Which graph shows these asymptote types?



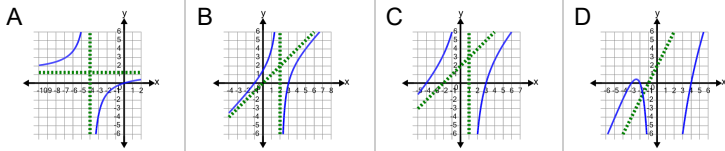
2 Horizontal asymptote (not at zero)

Which graph shows these asymptote types?



3 Which graph shows these asymptote types?

### Slant asymptote



4 Which graph shows these asymptote types?

### Vertical asymptote No horizontal or slant asymptote

