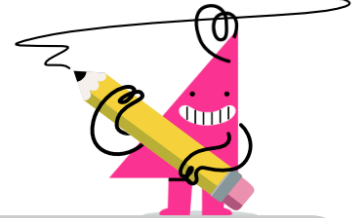


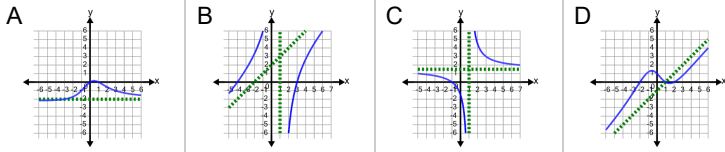


## Rational Functions and Asymptotes - Asymptotes to Graph



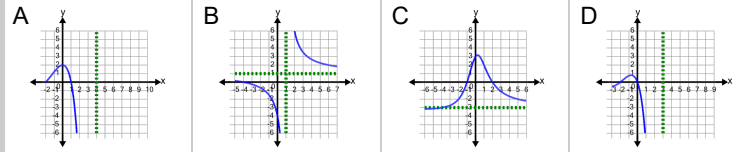
1 Which graph shows these asymptotes?

Slant asymptote at  $y = x - 1$



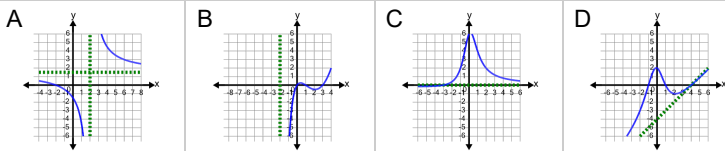
2 Which graph shows these asymptotes?

Vertical asymptote at  $x = 3$   
No horizontal or slant asymptote



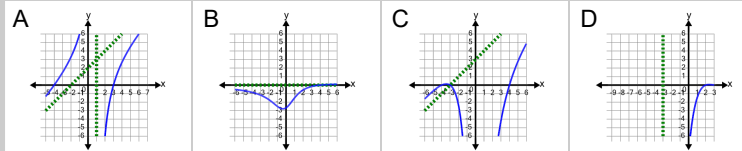
3 Which graph shows these asymptotes?

Vertical asymptote at  $x = -2$   
No horizontal or slant asymptote



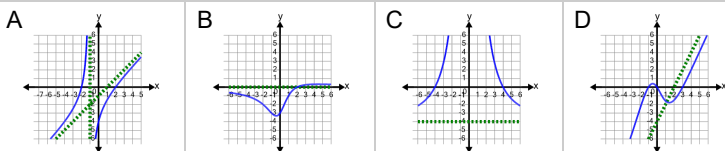
4 Which graph shows these asymptotes?

Slant asymptote at  $y = x + 3$



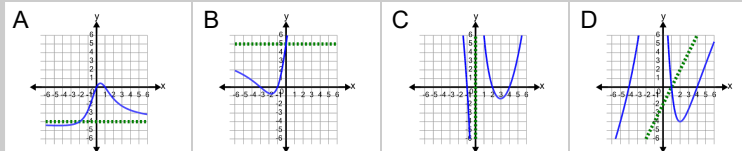
5 Horizontal asymptote at  $y = 0$

Which graph shows these asymptotes?



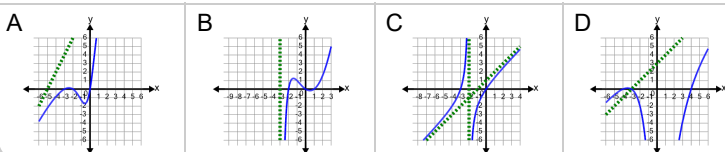
6 Horizontal asymptote at  $y = -4$

Which graph shows these asymptotes?



7 Slant asymptote at  $y = 2x + 10$

Which graph shows these asymptotes?



8 Which graph shows these asymptotes?

Vertical asymptote at  $x = -1$   
No horizontal or slant asymptote

