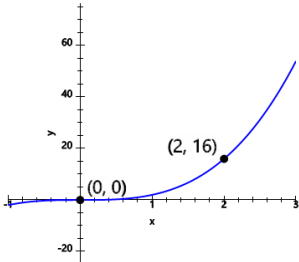




Average Rate of Change - Graph and 2 Points to Slope Expression

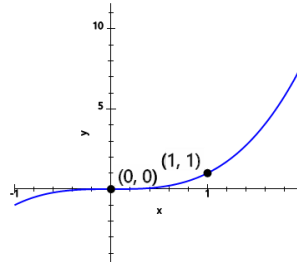
1 Write the expression for the average rate of change between the two marked points $(0, 0)$ and $(2, 16)$.



A $\frac{0 - 16}{2 - 0}$ B $\frac{16 - 0}{0 - 2}$ C $\frac{2 - 0}{16 - 0}$

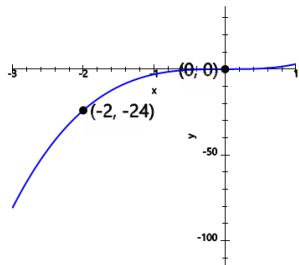
D $\frac{16 - 0}{2 - 0}$

2 Write the expression for the average rate of change between the two marked points $(0, 0)$ and $(1, 1)$.



A $\frac{0 - 1}{1 - 0}$ B $\frac{1 - 0}{1 - 0}$ C $\frac{1 - 0}{0 - 1}$

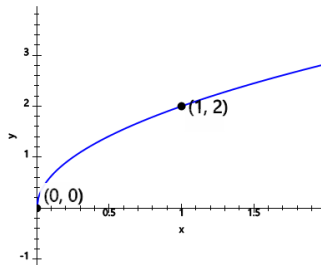
3 Write the expression for the average rate of change between the two marked points $(0, 0)$ and $(-2, -24)$.



A $\frac{(-24) - 0}{0 - (-2)}$ B $\frac{0 - (-24)}{(-2) - 0}$ C $\frac{(-2) - 0}{(-24) - 0}$

D $\frac{(-24) - 0}{(-2) - 0}$

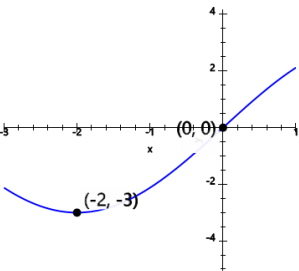
4 Write the expression for the average rate of change between the two marked points $(0, 0)$ and $(1, 2)$.



A $\frac{1 - 0}{2 - 0}$ B $\frac{0 - 2}{1 - 0}$ C $\frac{2 - 0}{0 - 1}$

D $\frac{2 - 0}{1 - 0}$

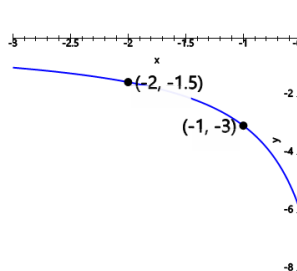
5 Write the expression for the average rate of change between the two marked points $(-2, -3)$ and $(0, 0)$.



A $\frac{0 - (-3)}{(-2) - 0}$ B $\frac{0 - (-2)}{0 - (-3)}$ C $\frac{(-3) - 0}{0 - (-2)}$

D $\frac{0 - (-3)}{0 - (-2)}$

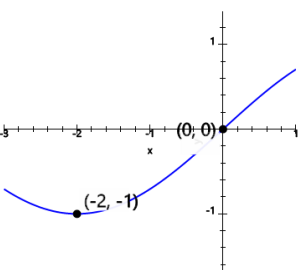
6 Write the expression for the average rate of change between the two marked points $(-2, -1.5)$ and $(-1, -3)$.



A $\frac{(-1.5) - (-3)}{(-2) - (-1)}$ B $\frac{(-3) - (-1.5)}{(-2) - (-1)}$ C $\frac{(-2) - (-1)}{(-1.5) - (-3)}$

D $\frac{(-1.5) - (-3)}{(-1) - (-2)}$

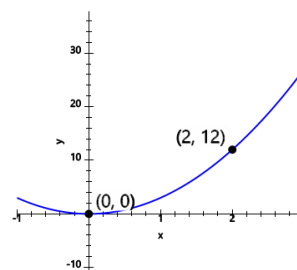
7 Write the expression for the average rate of change between the two marked points $(0, 0)$ and $(-2, -1)$.



A $\frac{0 - (-1)}{(-2) - 0}$ B $\frac{(-2) - 0}{(-1) - 0}$ C $\frac{(-1) - 0}{0 - (-2)}$

D $\frac{(-1) - 0}{(-2) - 0}$

8 Write the expression for the average rate of change between the two marked points $(0, 0)$ and $(2, 12)$.



A $\frac{2 - 0}{12 - 0}$ B $\frac{12 - 0}{2 - 0}$ C $\frac{0 - 12}{2 - 0}$

D $\frac{12 - 0}{0 - 2}$