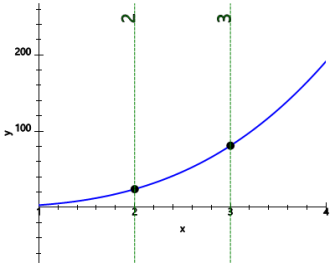


Average Rate of Change - Graph and 2 X-Coordinates to Slope

1 Find the average rate of change between the two highlighted x-values $x=2$ and $x=3$.

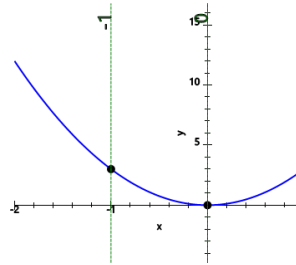
$$y = 3x^2$$



- | | | |
|-----|---|------|
| A | B | C |
| -57 | 0 | 55.4 |
| D | | |
| 57 | | |

2 Find the average rate of change between the two highlighted x-values $x=0$ and $x=-1$.

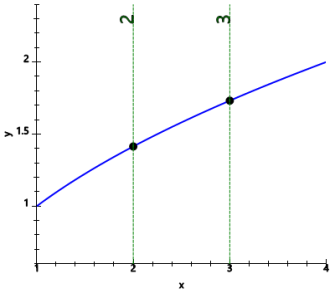
$$y = 3x^2$$



- | | | |
|----|------|---|
| A | B | C |
| -6 | -0.3 | 3 |
| D | | |
| -3 | | |

3 Find the average rate of change between the two highlighted x-values $x=2$ and $x=3$.

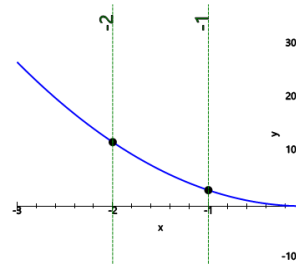
$$y = 7x$$



- | | | |
|------|-----|-----|
| A | B | C |
| -0.3 | 3.1 | 0.3 |
| D | | |
| 2.7 | | |

4 Find the average rate of change between the two highlighted x-values $x=-1$ and $x=-2$.

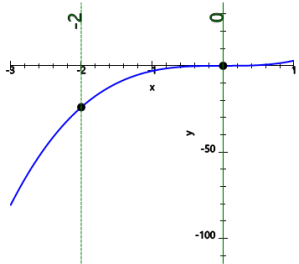
$$y = 3x^2$$



- | | | |
|------|------|---|
| A | B | C |
| -9.9 | -0.1 | 9 |
| D | | |
| -9 | | |

5 Find the average rate of change between the two highlighted x-values $x=0$ and $x=-2$.

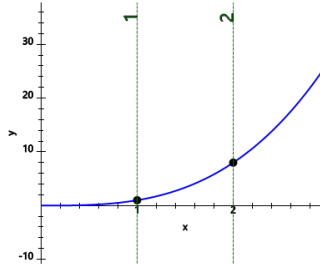
$$y = 3x^2$$



- | | | |
|------|-----|----|
| A | B | C |
| 12.7 | -12 | 12 |
| D | E | |
| 0.1 | -24 | |

6 Find the average rate of change between the two highlighted x-values $x=1$ and $x=2$.

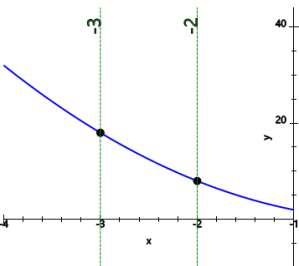
$$y = x^2$$



- | | | |
|-----|----|-----|
| A | B | C |
| 0.1 | -7 | 9.5 |
| D | | |
| 7 | | |

7 Find the average rate of change between the two highlighted x-values $x=-2$ and $x=-3$.

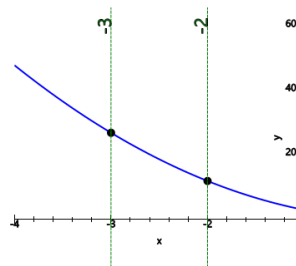
$$y = 2x^2$$



- | | | |
|------|----|------|
| A | B | C |
| -0.1 | 10 | -8.8 |
| D | | |
| -10 | | |

8 Find the average rate of change between the two highlighted x-values $x=-2$ and $x=-3$.

$$y = 3x^2$$



- | | | |
|-------|------|----|
| A | B | C |
| -15 | -0.1 | 15 |
| D | | |
| -13.5 | | |