



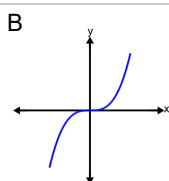
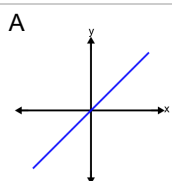
## Function End Behaviour (Polynomials) - Behaviour to Graph

**1**

Which graph shows this end behaviour?

as  $x \rightarrow -\infty, y \rightarrow -\infty$

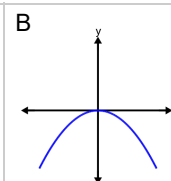
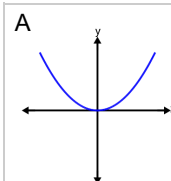
as  $x \rightarrow \infty, y \rightarrow \infty$

**2**

Which graph shows this end behaviour?

as  $x \rightarrow -\infty, y \rightarrow -\infty$

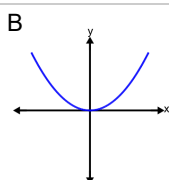
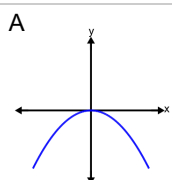
as  $x \rightarrow \infty, y \rightarrow -\infty$

**3**

Which graph shows this end behaviour?

as  $x \rightarrow -\infty, y \rightarrow \infty$

as  $x \rightarrow \infty, y \rightarrow \infty$

**4**

Which graph shows this end behaviour?

as  $x \rightarrow -\infty, y \rightarrow \infty$

as  $x \rightarrow \infty, y \rightarrow -\infty$

