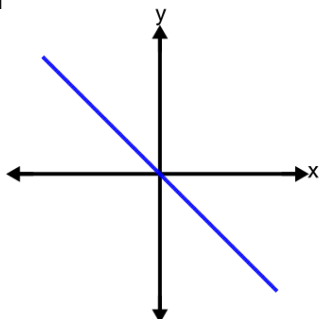


Function End Behaviour (Polynomials) - Graph to Rule

1



What does this graph's end behaviour tell us about its highest power and leading coefficient?

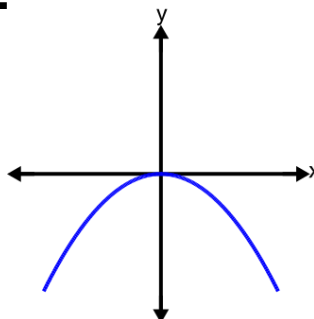
A

highest power = odd
leading coefficient = negative

B

highest power = odd
leading coefficient = positive

2



What does this graph's end behaviour tell us about its highest power and leading coefficient?

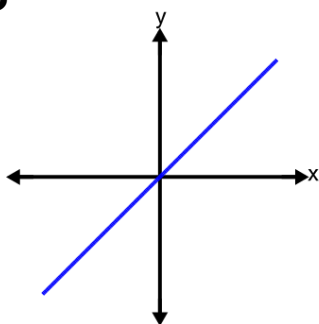
A

highest power = even
leading coefficient = negative

B

highest power = even
leading coefficient = positive

3



What does this graph's end behaviour tell us about its highest power and leading coefficient?

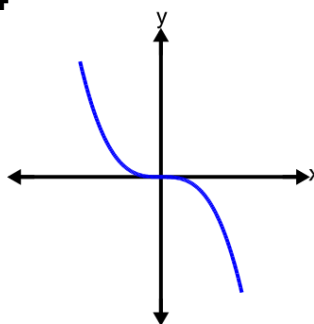
A

highest power = odd
leading coefficient = positive

B

highest power = odd
leading coefficient = negative

4



What does this graph's end behaviour tell us about its highest power and leading coefficient?

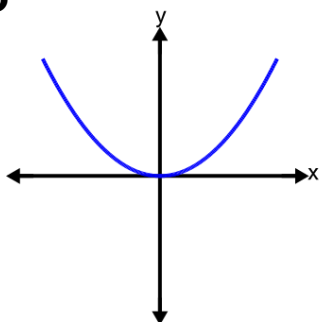
A

highest power = odd
leading coefficient = positive

B

highest power = odd
leading coefficient = negative

5



What does this graph's end behaviour tell us about its highest power and leading coefficient?

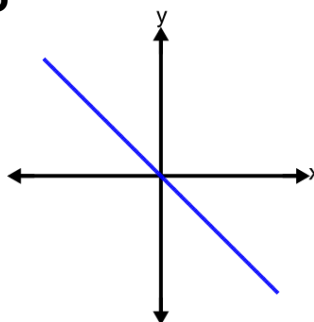
A

highest power = odd
leading coefficient = positive

B

highest power = even
leading coefficient = positive

6



What does this graph's end behaviour tell us about its highest power and leading coefficient?

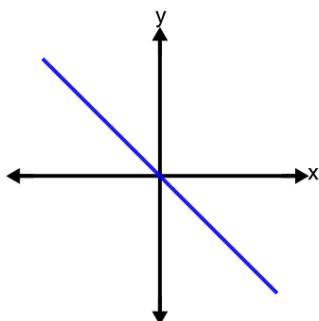
A

highest power = odd
leading coefficient = negative

B

highest power = odd
leading coefficient = positive

7



What does this graph's end behaviour tell us about its highest power and leading coefficient?

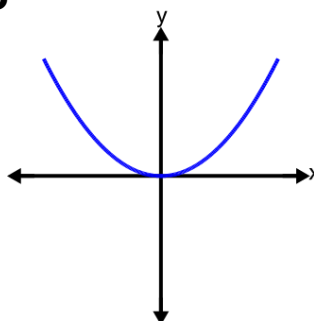
A

highest power = odd
leading coefficient = negative

B

highest power = odd
leading coefficient = positive

8



What does this graph's end behaviour tell us about its highest power and leading coefficient?

A

highest power = odd
leading coefficient = positive

B

highest power = even
leading coefficient = positive