

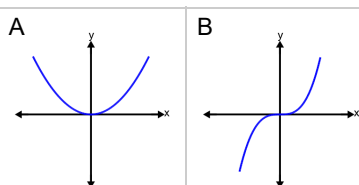
Function End Behaviour (Polynomials) - Power and Coefficient to Graph

1

Which graph's end behaviour would this power and coefficient create?

highest power = 2

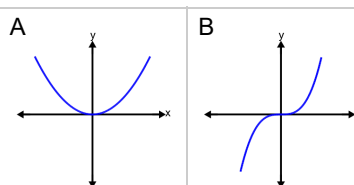
leading coefficient = 5

**2**

Which graph's end behaviour would this power and coefficient create?

highest power = 3

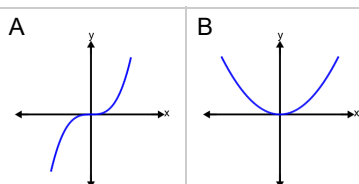
leading coefficient = 2

**3**

Which graph's end behaviour would this power and coefficient create?

highest power = 3

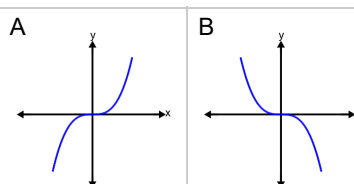
leading coefficient = 3

**4**

Which graph's end behaviour would this power and coefficient create?

highest power = 3

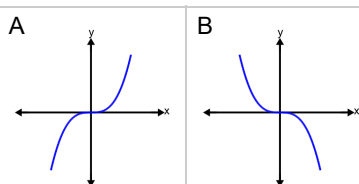
leading coefficient = -3

**5**

Which graph's end behaviour would this power and coefficient create?

highest power = 3

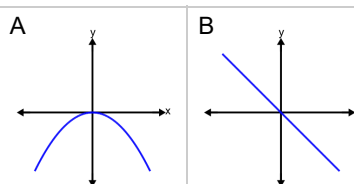
leading coefficient = 4

**6**

Which graph's end behaviour would this power and coefficient create?

highest power = 2

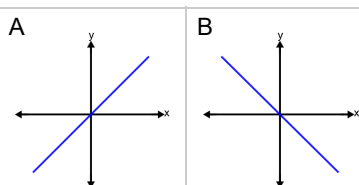
leading coefficient = -2

**7**

Which graph's end behaviour would this power and coefficient create?

highest power = 1

leading coefficient = 4

**8**

Which graph's end behaviour would this power and coefficient create?

highest power = 1

leading coefficient = -2

