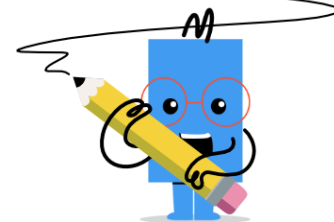
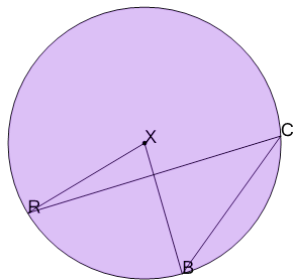
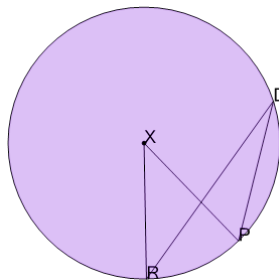




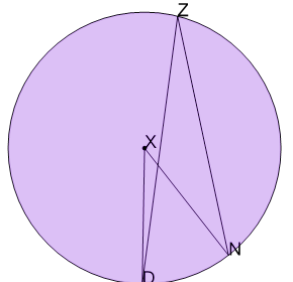
Geometry of Circles - Inscribed Angle from Central

**1**Find angle BXR if angle BCR is 37.5° 

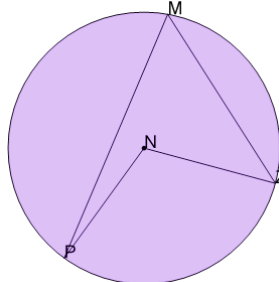
A	50°	B	70°
C	55°	D	80°
E	19°	F	75°

2Find angle PXR if angle PDR is 21.5° 

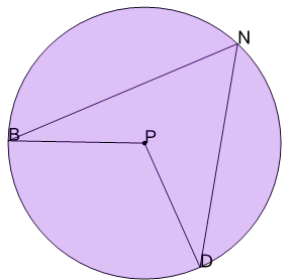
A	18°	B	53°
C	11°	D	38°
E	43°	F	28°

3Find angle NXD if angle NZD is 19.5° 

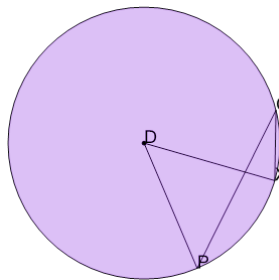
A	49°	B	54°
C	39°	D	19°
E	10°	F	44°

4Find angle ZNP if angle ZMP is 55.5° 

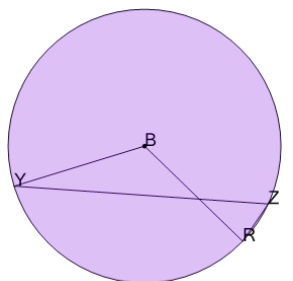
A	126°	B	131°
C	28°	D	121°
E	111°	F	101°

5Find angle DPB if angle DNB is 57.5° 

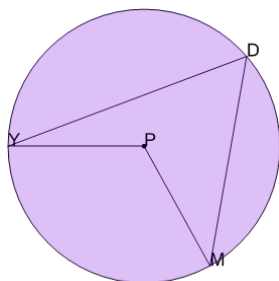
A	115°	B	29°
C	110°	D	135°
E	120°	F	130°

6Find angle XDP if angle XCP is 25.5° 

A	51°	B	56°
C	31°	D	61°
E	13°	F	66°

7Find angle RBY if angle RZY is 59.5° 

A	109°	B	119°
C	30°	D	99°
E	94°	F	139°

8Find angle MPY if angle MDY is 59.5° 

A	139°	B	30°
C	124°	D	119°
E	134°	F	104°