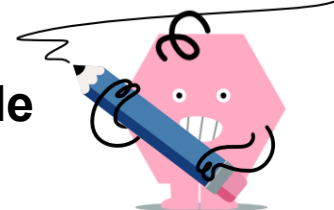
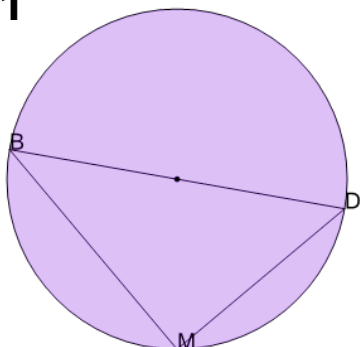




Geometry of Circles - Inscribed Triangle on Diameter - Missing Angle Rule



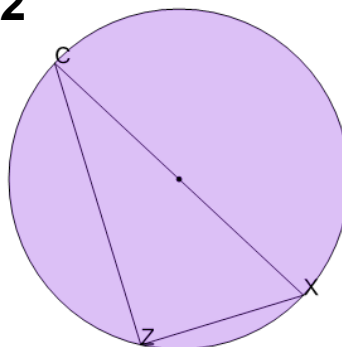
1



What is known about angle MDB and MBD given that DB forms a diameter?

- A MDB is the same as MBD
- B MDB is twice MBD
- C Nothing, MDB and MBD are not subtended by the same arc
- D MDB is half MBD
- E MDB and MBD add to 90°
- F MDB and MBD add to 180°

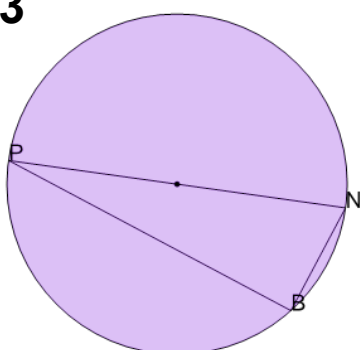
2



What is known about angle ZXC and ZCX given that XC forms a diameter?

- A ZXC and ZCX add to 90°
- B Nothing, ZXC and ZCX are not subtended by the same arc
- C ZXC is half ZCX
- D ZXC is the same as ZCX
- E ZXC and ZCX add to 180°
- F ZXC and ZCX add to 90°

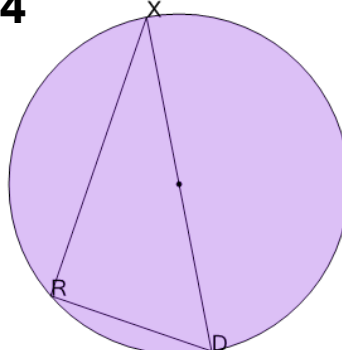
3



What is known about angle BNP and BPN given that NP forms a diameter?

- A BNP is half BPN
- B BNP and BPN add to 90°
- C Nothing, BNP and BPN are not subtended by the same arc
- D BNP is twice BPN
- E BNP is the same as BPN
- F BNP and BPN add to 180°

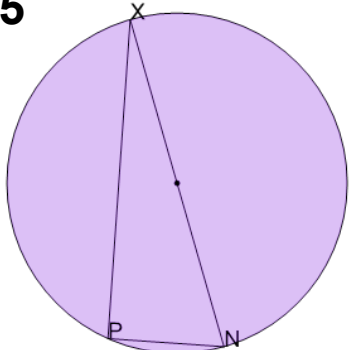
4



What is known about angle RDX and RXD given that DX forms a diameter?

- A RDX is the same as RXD
- B RDX and RXD add to 90°
- C RDX is twice RXD
- D RDX is half RXD
- E RDX and RXD add to 180°
- F Nothing, RDX and RXD are not subtended by the same arc

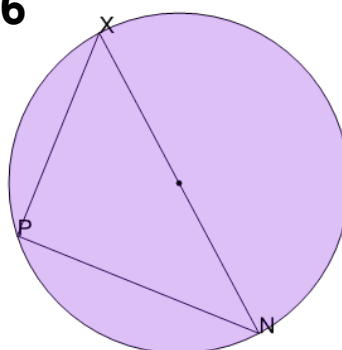
5



What is known about angle PNX and PXN given that NX forms a diameter?

- A PNX and PXN add to 90°
- B PNX is the same as PXN
- C PNX and PXN add to 180°
- D PNX is half PXN
- E Nothing, PNX and PXN are not subtended by the same arc
- F PNX is twice PXN

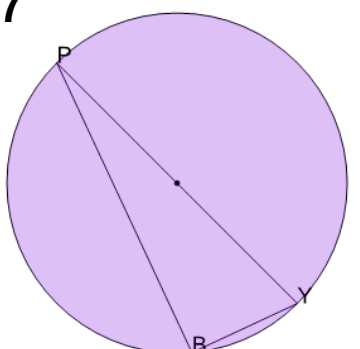
6



What is known about angle PNX and PXN given that NX forms a diameter?

- A PNX is half PXN
- B PNX is the same as PXN
- C PNX and PXN add to 90°
- D PNX and PXN add to 180°
- E Nothing, PNX and PXN are not subtended by the same arc
- F PNX is twice PXN

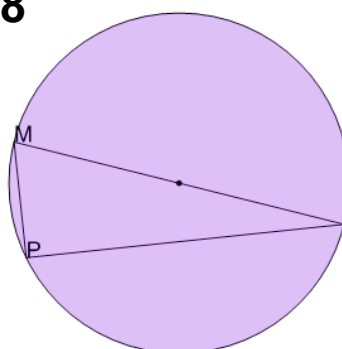
7



What is known about angle BYP and BPY given that YP forms a diameter?

- A BYP and BPY add to 90°
- B BYP is the same as BPY
- C BYP and BPY add to 180°
- D Nothing, BYP and BPY are not subtended by the same arc
- E BYP is twice BPY
- F BYP is half BPY

8



What is known about angle PXM and PMX given that XM forms a diameter?

- A PXM is the same as PMX
- B PXM and PMX add to 90°
- C PXM is half PMX
- D PXM and PMX add to 180°
- E Nothing, PXM and PMX are not subtended by the same arc
- F PXM and PMX add to 90°