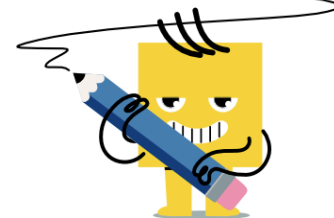




## Geometry of Circles - Chord Bisector Through Center Values



**1** What is the length of X?

A	B	C
130	80	65
D	E	
15	160	

(not to scale)

**2** What is the length of X?

A	B	C
90	10	180
D	E	
160	80	

(not to scale)

**3** What is the length of X?

A	B	C
15	70	110
D	E	
140	55	

(not to scale)

**4** What is the length of X?

A	B	C
85	150	170
D	E	
10	75	

(not to scale)

**5** What is the length of X?

A	B	C
15	60	75
D	E	
150	120	

(not to scale)

**6** What is the length of X?

A	B	C
5	140	75
D	E	
70	150	

(not to scale)

**7** What is the length of X?

A	B	C
170	70	85
D	E	
140	15	

(not to scale)

**8** What is the length of X?

A	B	C
75	70	140
D	E	
5	150	

(not to scale)