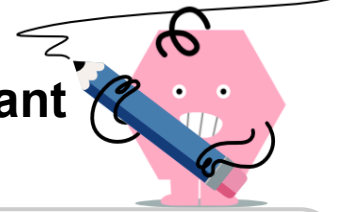




Geometry of Circles - Chords Equidistant From Center Rule



1 What geometry rule would help find length ZP?

(not to scale)

A Length RD will be twice YM
B Length RD will be identical to YM
C Length RD will be twice ZP
D Length RD will be identical to ZP

2 What geometry rule would help find length YC?

(not to scale)

A Length YC will be twice XM
B Length YC will be identical to DZ
C Length YC will be identical to XM
D Length YC will be twice DZ

3 What geometry rule would help find length YB?

(not to scale)

A Length RD will be identical to YB
B Length RD will be twice PZ
C Length RD will be twice YB
D Length RD will be identical to PZ

4 What geometry rule would help find length RN?

(not to scale)

A Length XD will be identical to RN
B Length XD will be twice RN
C Length XD will be identical to CZ
D Length XD will be twice CZ

5 What geometry rule would help find length RM?

(not to scale)

A Length RM will be identical to NX
B Length RM will be twice CY
C Length RM will be identical to CY
D Length RM will be twice NX

6 What geometry rule would help find length CR?

(not to scale)

A Length PD will be identical to CR
B Length PD will be twice CR
C Length PD will be identical to YM
D Length PD will be twice YM

7 What geometry rule would help find length NC?

(not to scale)

A Length RZ will be twice DB
B Length RZ will be identical to DB
C Length RZ will be identical to NC
D Length RZ will be twice NC

8 What geometry rule would help find length BY?

(not to scale)

A Length MX will be identical to BY
B Length MX will be twice DZ
C Length MX will be twice BY
D Length MX will be identical to DZ