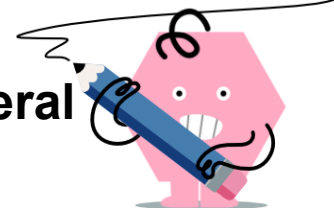
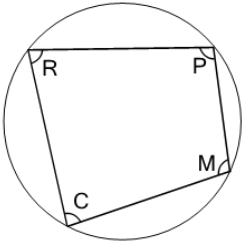
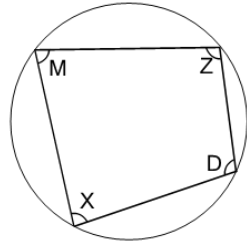
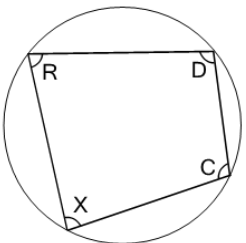
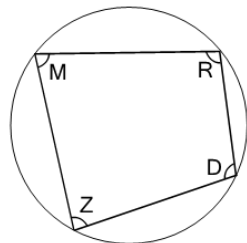
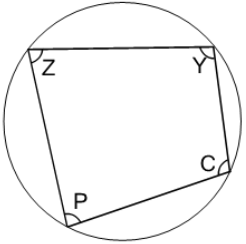
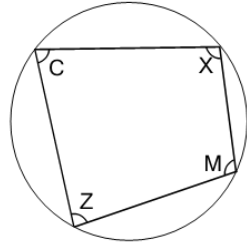
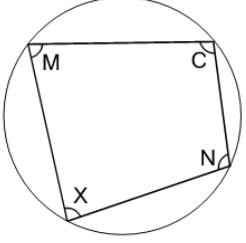
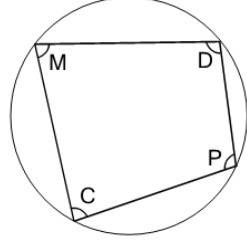




## Geometry of Circles - Cyclic Quadrilateral Angles Rule



<b>1</b> What geometry rule would help find angle C?  (not to scale)	<b>A</b> Angles P and C add up to $180^\circ$ <b>B</b> Angles P and C are identical <b>C</b> Angles M and C add up to $180^\circ$ <b>D</b> Angles P and C add up to $90^\circ$	<b>2</b> What geometry rule would help find angle X?  (not to scale)	<b>A</b> Angles Z and X add up to $90^\circ$ <b>B</b> Angles Z and X are identical <b>C</b> Angles D and X add up to $180^\circ$ <b>D</b> Angles Z and X add up to $180^\circ$
<b>3</b> What geometry rule would help find angle D?  (not to scale)	<b>A</b> Angles D and X add up to $90^\circ$ <b>B</b> Angles D and X are identical <b>C</b> Angles C and X add up to $180^\circ$ <b>D</b> Angles D and X add up to $180^\circ$	<b>4</b> What geometry rule would help find angle R?  (not to scale)	<b>A</b> Angles R and Z are identical <b>B</b> Angles R and Z add up to $180^\circ$ <b>C</b> Angles R and Z add up to $90^\circ$ <b>D</b> Angles D and Z add up to $180^\circ$
<b>5</b> What geometry rule would help find angle P?  (not to scale)	<b>A</b> Angles Y and P are identical <b>B</b> Angles C and P add up to $180^\circ$ <b>C</b> Angles Y and P add up to $180^\circ$ <b>D</b> Angles Y and P add up to $90^\circ$	<b>6</b> What geometry rule would help find angle C?  (not to scale)	<b>A</b> Angles C and M are identical <b>B</b> Angles C and X add up to $180^\circ$ <b>C</b> Angles C and M add up to $90^\circ$ <b>D</b> Angles C and M add up to $180^\circ$
<b>7</b> What geometry rule would help find angle N?  (not to scale)	<b>A</b> Angles M and N add up to $180^\circ$ <b>B</b> Angles M and C add up to $180^\circ$ <b>C</b> Angles M and N add up to $90^\circ$ <b>D</b> Angles M and N are identical	<b>8</b> What geometry rule would help find angle C?  (not to scale)	<b>A</b> Angles D and C add up to $180^\circ$ <b>B</b> Angles P and C add up to $180^\circ$ <b>C</b> Angles D and C are identical <b>D</b> Angles D and C add up to $90^\circ$