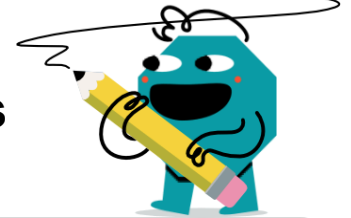
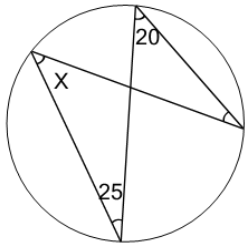




Geometry of Circles - Inscribed Angles Two Sides Values

**1**

What is angle X?



(not to scale)

A

40

B

35

C

10

D

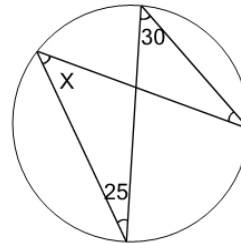
25

E

20

2

What is angle X?



(not to scale)

A

30

B

50

C

55

D

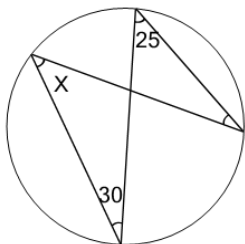
35

E

25

3

What is angle X?



(not to scale)

A

25

B

50

C

5

D

15

E

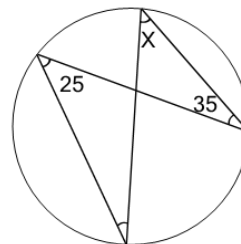
40

F

45

4

What is angle X?



(not to scale)

A

30

B

20

C

35

D

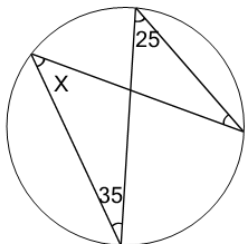
25

E

5

5

What is angle X?



(not to scale)

A

35

B

45

C

5

D

25

E

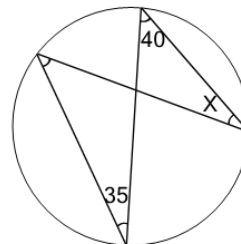
20

F

50

6

What is angle X?



(not to scale)

A

60

B

10

C

25

D

35

E

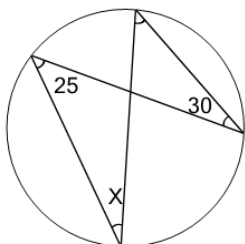
55

F

15

7

What is angle X?



(not to scale)

A

40

B

30

C

20

D

45

E

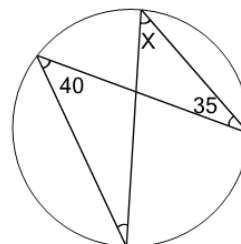
15

F

25

8

What is angle X?



(not to scale)

A

15

B

60

C

35

D

20

E

40

F

30