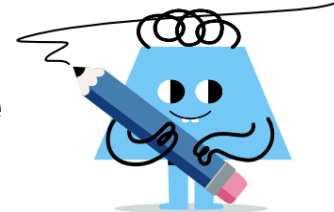
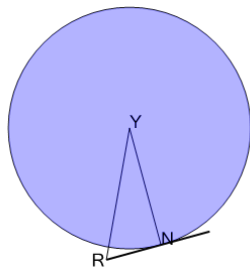




Geometry of Circles - Tangent Triangle with Missing Angle

**1**

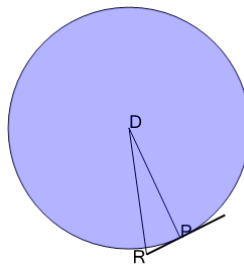
Find angle NRY in degrees
given that NYR is 35°



A	55°	B	130°
C	115°	D	20°
E	70°	F	5°

2

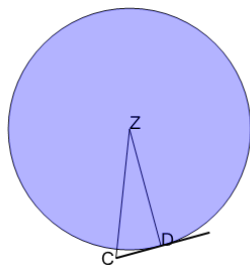
Find angle PDR in degrees
given that PRD is 65°



A	5°	B	115°
C	50°	D	100°
E	25°	F	55°

3

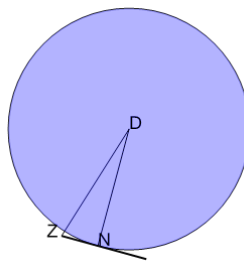
Find angle DZC in degrees
given that DCZ is 60°



A	120°	B	30°
C	15°	D	45°
E	75°	F	90°

4

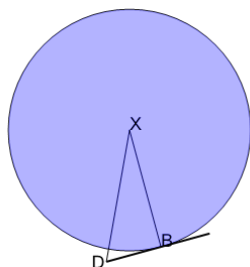
Find angle NZD in degrees
given that NDZ is 25°



A	20°	B	65°
C	125°	D	35°
E	155°	F	50°

5

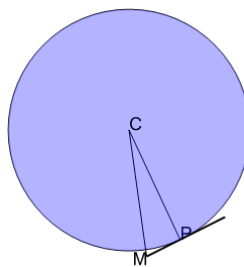
Find angle BDY in degrees
given that BYD is 35°



A	100°	B	55°
C	130°	D	10°
E	115°	F	85°

6

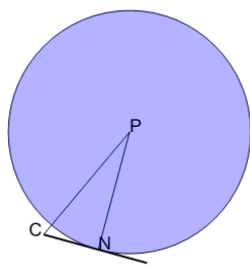
Find angle PCM in degrees
given that PMC is 65°



A	35°	B	70°
C	20°	D	100°
E	50°	F	25°

7

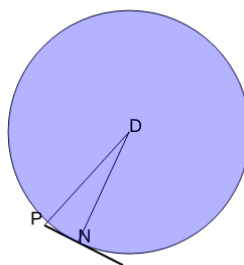
Find angle NPC in degrees
given that NCP is 55°



A	125°	B	10°
C	5°	D	65°
E	35°	F	80°

8

Find angle NPD in degrees
given that NDP is 25°



A	95°	B	50°
C	80°	D	110°
E	140°	F	65°