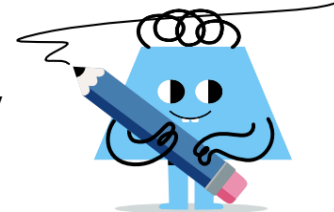




Measurement Conversion - Customary Length Units with Sub Units



1 Convert this value to inches 22.42 ft	A 201.8 in	B 470.8 in	2 Convert this value to inches 25.33 yrd	A 2,280 in	B 2,964 in
	C 403.5 in	D 807 in		C 91,200 in	D 1,140 in
	E 269 in	F 605.3 in		E 2,736 in	F 912 in
3 Convert this value to feet and inches 7.33 yrd	A 38 ft 6 in	B 16 ft 6 in	4 Convert this value to inches 29.67 ft	A 445 in	B 356 in
	C 5 ft 6 in	D 60 ft 6 in		C 534 in	D 1,068 in
	E 22 ft	F 71 ft 6 in		E 35,600 in	F 267 in
5 Convert this value to feet and inches 25.67 yrd	A 0 ft	B 770 ft	6 Convert this value to feet and inches 365 in	A 30 ft 5 in	B 7 ft 7 in
	C 19 ft 3 in	D 134 ft 9 in		C 53 ft 3 in	D 68 ft 5 in
	E 115 ft 6 in	F 77 ft		E 0 ft	F 22 ft 10 in
7 Convert this value to inches 2.083 ft	A 2,500 in	B 19 in	8 Convert this value to yards and feet 21 in	A 0 yrd	B 0.87 ft
	C 56 in	D 12 in		C 0.44 ft	D 1.75 ft
	E 25 in	F 2.5 in		E 2.19 ft	F 2.62 ft