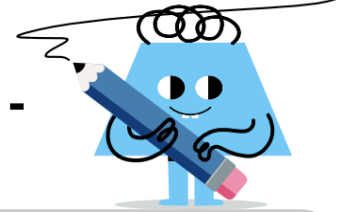
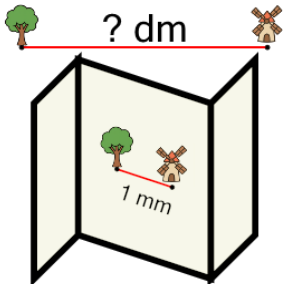




Metric Unit Scale on Map - Find Actual - Less than 1000 - Change Single Unit



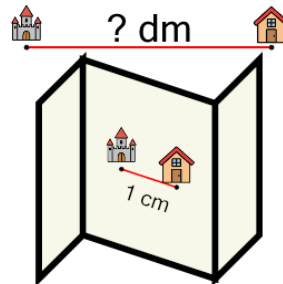
- 1** The map has a scale of 1:3,000. How many decimeters would 1 mm on the map represent?



Scale: 1:3,000

A	0.3 dm	B	30,000 dm
C	30 dm	D	300 dm
E	3 dm		

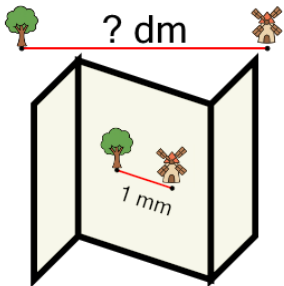
- 2** The map has a scale of 1:300. How many decimeters would 1 cm on the map represent?



Scale: 1:300

A	3 dm	B	0.3 dm
C	300 dm	D	30,000 dm
E	30 dm		

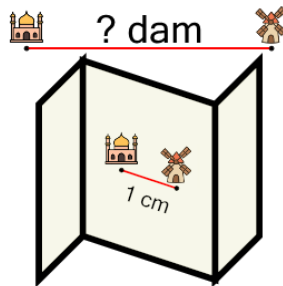
- 3** The map has a scale of 1:70. How many decimeters would 1 mm on the map represent?



Scale: 1:70

A	0.7 dm	B	0.007 dm
C	7 dm	D	0.0007 dm
E	0.07 dm	F	700 dm

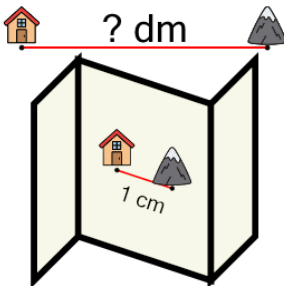
- 4** The map has a scale of 1:9,000. How many decimeters would 1 cm on the map represent?



Scale: 1:9,000

A	0.09 dam	B	0.9 dam
C	9,000 dam	D	9 dam
E	900 dam		

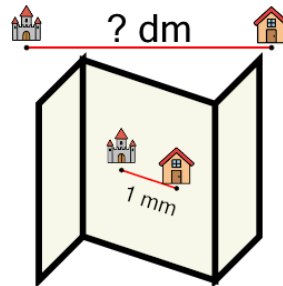
- 5** The map has a scale of 1:30. How many decimeters would 1 cm on the map represent?



Scale: 1:30

A	300 dm	B	0.03 dm
C	3 dm	D	3,000 dm
E	0.003 dm	F	30 dm

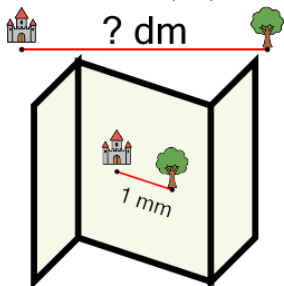
- 6** The map has a scale of 1:600. How many decimeters would 1 mm on the map represent?



Scale: 1:600

A	600 dm	B	0.6 dm
C	60 dm	D	6 dm
E	0.06 dm		

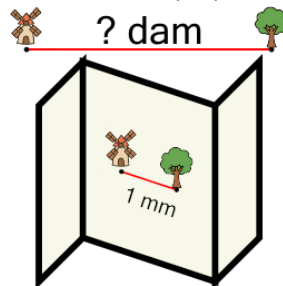
- 7** The map has a scale of 1:70. How many decimeters would 1 mm on the map represent?



Scale: 1:70

A	0.07 dm	B	7 dm
C	0.7 dm	D	700 dm
E	0.007 dm	F	0.0007 dm

- 8** The map has a scale of 1:9,000. How many decimeters would 1 mm on the map represent?



Scale: 1:9,000

A	0.009 dam	B	0.9 dam
C	0.0009 dam	D	0.09 dam
E	900 dam		