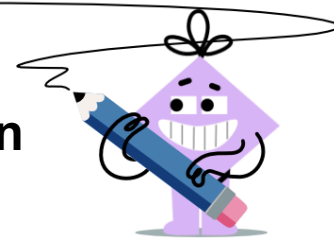




Metric Units - Exponent to Abbreviation (Extremely Large)



1

What is the abbreviation
for this power of 10? 10^{24}

A	B	C
Z	E	Y
D	E	F
P	T	G

2

What is the abbreviation
for this power of 10? 10^{12}

A	B	C
P	G	T
D	E	F
Y	Z	E

3

What is the abbreviation
for this power of 10? 10^9

A	B	C
T	Z	Y
D	E	F
G	P	E

4

What is the abbreviation
for this power of 10? 10^{21}

A	B	C
P	G	Z
D	E	F
Y	E	T

5

What is the abbreviation
for this power of 10? 10^{15}

A	B	C
P	Z	Y
D	E	F
T	E	G

6

What is the abbreviation
for this power of 10? 10^{18}

A	B	C
Z	Y	G
D	E	F
E	T	P

7

What is the abbreviation
for this power of 10? 10^6

A	B	C
M	E	Y
D	E	F
Z	P	T