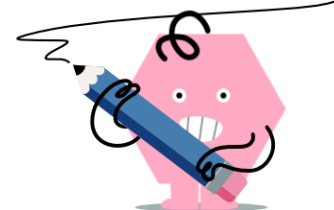




Metric Units - Exponent to Prefix (Very Small)



1 What is the prefix for this power of 10?

10^0

A (base)	B nano
C milli	D pico
E micro	

2 What is the prefix for this power of 10?

10^{-3}

A pico	B (base)
C nano	D micro
E milli	

3 What is the prefix for this power of 10?

10^{-6}

A milli	B nano
C (base)	D micro
E pico	

4 What is the prefix for this power of 10?

10^{-9}

A milli	B pico
C nano	D micro
E (base)	

5 What is the prefix for this power of 10?

10^{-12}

A (base)	B nano
C pico	D micro
E milli	