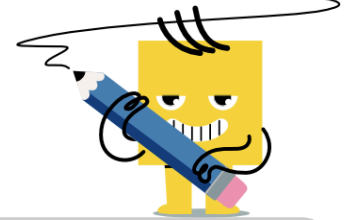


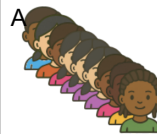


## Multiplication Car Model - Per Car and Car Count to Total (1 Digit)

**1**

5 cars    5 per car

5 cars each contain 5 riders. How many total riders?



25 riders

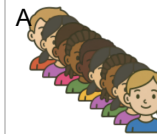


26 riders

**2**

5 cars    4 per car

5 cars each contain 4 riders. How many total riders?



20 riders



19 riders

**3**

2 cars    4 per car

2 cars each contain 4 riders. How many total riders?



8 riders

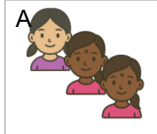


7 riders

**4**

2 cars    2 per car

2 cars each contain 2 riders. How many total riders?



3 riders



4 riders

**5**

4 cars    4 per car

4 cars each contain 4 riders. How many total riders?



16 riders

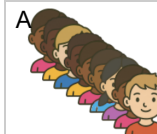


15 riders

**6**

6 cars    2 per car

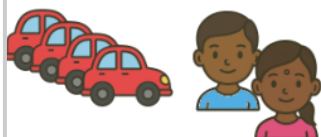
6 cars each contain 2 riders. How many total riders?



12 riders

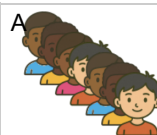


13 riders

**7**

4 cars    2 per car

4 cars each contain 2 riders. How many total riders?



7 riders

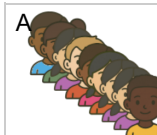


8 riders

**8**

7 cars    3 per car

7 cars each contain 3 riders. How many total riders?



21 riders



22 riders