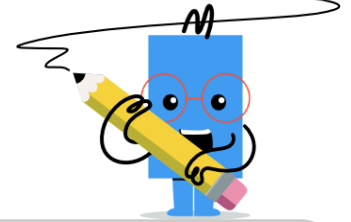
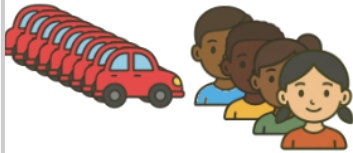


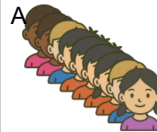


Multiplication Car Model - Per Car and Car Count to Total (1 Digit)

**1**

9 cars 4 per car

9 cars each contain 4 riders. How many total riders?



36 riders

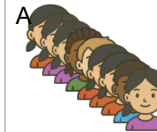


37 riders

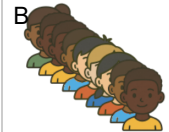
2

7 buses 6 per bus

7 buses each contain 6 riders. How many total riders?



41 riders

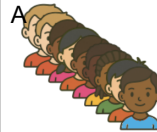


42 riders

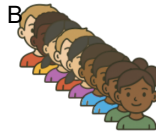
3

7 cars 5 per car

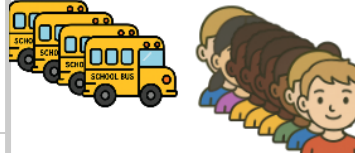
7 cars each contain 5 riders. How many total riders?



35 riders

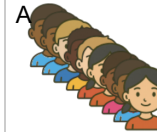


36 riders

4

4 buses 8 per bus

4 buses each contain 8 riders. How many total riders?



32 riders



33 riders

5

5 buses 6 per bus

5 buses each contain 6 riders. How many total riders?



30 riders

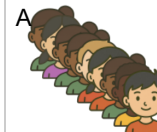


31 riders

6

7 cars 4 per car

7 cars each contain 4 riders. How many total riders?



28 riders



27 riders

7

8 cars 4 per car

8 cars each contain 4 riders. How many total riders?



32 riders



33 riders

8

3 buses 9 per bus

3 buses each contain 9 riders. How many total riders?



28 riders



27 riders