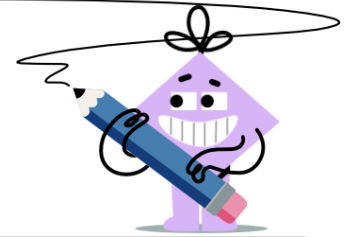




Multiplication Car Model - Per Car and Car Count to Total (1 Digit)



1



7 buses 9 per bus

7 buses each contain 9 riders.
How many total riders?



64 riders



63 riders

2



9 buses 9 per bus

9 buses each contain 9 riders.
How many total riders?



81 riders



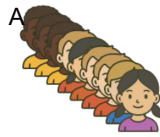
80 riders

3

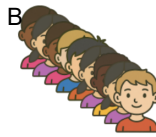


9 buses 6 per bus

9 buses each contain 6 riders.
How many total riders?



55 riders



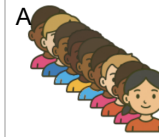
54 riders

4



9 buses 8 per bus

9 buses each contain 8 riders.
How many total riders?



71 riders



72 riders

5



8 buses 8 per bus

8 buses each contain 8 riders.
How many total riders?



64 riders



63 riders