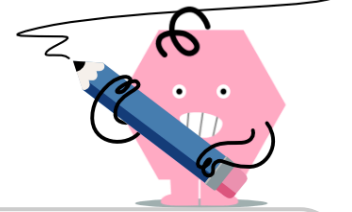




Multiplication Car Model - Per Car and Car Count to Total (2 Digit)



1

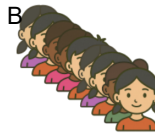


10 cars 2 per car

10 cars each contain 2 riders. How many total riders?



21 riders



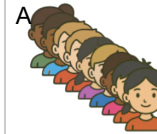
20 riders

2



11 cars 2 per car

11 cars each contain 2 riders. How many total riders?



22 riders



23 riders

3

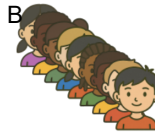


12 cars 2 per car

12 cars each contain 2 riders. How many total riders?



25 riders



24 riders