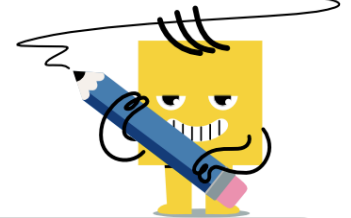




Multiplication Car Model - Per Car and Car Count to Total (2 Digit)



1



18 cars 2 per car

18 cars each contain 2 riders. How many total riders?



36 riders



37 riders

2

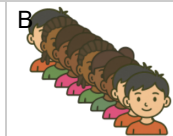


12 cars 4 per car

12 cars each contain 4 riders. How many total riders?



48 riders



47 riders

3



15 cars 2 per car

15 cars each contain 2 riders. How many total riders?



31 riders



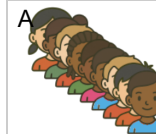
30 riders

4



13 cars 3 per car

13 cars each contain 3 riders. How many total riders?



38 riders



39 riders

5



21 cars 2 per car

21 cars each contain 2 riders. How many total riders?



41 riders



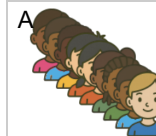
42 riders

6



24 cars 2 per car

24 cars each contain 2 riders. How many total riders?



47 riders



48 riders

7

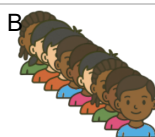


5 buses 10 per bus

5 buses each contain 10 riders. How many total riders?



51 riders



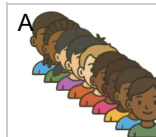
50 riders

8

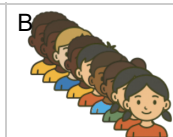


13 cars 2 per car

13 cars each contain 2 riders. How many total riders?



26 riders



25 riders