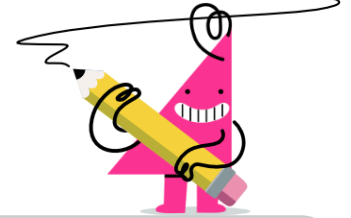




## Multiplication - Commutative Property



<b>1</b> Select the equation that is the same as the given multiplication equation using the commutative property  $2 \times 7 \times 3$	A $9 \times 14$	B $9 \times 3$	<b>2</b> Select the equation that is the same as the given multiplication equation using the commutative property  $2 \times 6 \times 3$	A $10 \times 3$	B $17 \times 3$
	C $20 \times 11$	D $14 \times 3$		C $2 \times 18$	D $11 \times 4$
	E $9 \times 15$	F $2 \times 10$		E $2 \times 9$	F $8 \times 3$
<b>3</b> Select the equation that is the same as the given multiplication equation using the commutative property  $2 \times 9 \times 6$	A $11 \times 6$	B $17 \times 6$	<b>4</b> Select the equation that is the same as the given multiplication equation using the commutative property  $2 \times 8 \times 7$	A $2 \times 56$	B $2 \times 15$
	C $5 \times 6$	D $18 \times 6$		C $13 \times 7$	D $11 \times 20$
	E $20 \times 18$	F $2 \times 15$		E $15 \times 18$	F $10 \times 7$
<b>5</b> Select the equation that is the same as the given multiplication equation using the commutative property  $3 \times 5 \times 6$	A $3 \times 30$	B $9 \times 19$	<b>6</b> Select the equation that is the same as the given multiplication equation using the commutative property  $2 \times 8 \times 4$	A $7 \times 6$	B $2 \times 12$
	C $12 \times 6$	D $8 \times 6$		C $6 \times 17$	D $2 \times 32$
	E $22 \times 8$	F $3 \times 11$		E $15 \times 6$	F $7 \times 8$
<b>7</b> Select the equation that is the same as the given multiplication equation using the commutative property  $2 \times 8 \times 5$	A $16 \times 5$	B $17 \times 18$	<b>8</b> Select the equation that is the same as the given multiplication equation using the commutative property  $3 \times 6 \times 4$	A $3 \times 10$	B $4 \times 16$
	C $20 \times 5$	D $14 \times 13$		C $3 \times 24$	D $17 \times 4$
	E $4 \times 5$	F $10 \times 5$		E $9 \times 4$	F $11 \times 15$