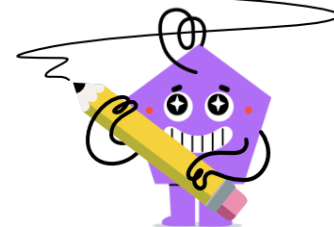




Negative Integer Addition and Subtraction - Intro



- 1** Subtracting a negative is the same as adding a positive. The first number is also positive, so this results in an even bigger positive.

$$4 - -1 = ?$$

A	B	C	D	E	F
3	4	7	-3	5	-4

- 2** Subtracting a negative is the same as adding a positive. The first number is also positive, so this results in an even bigger positive.

$$4 - -4 = ?$$

A	B	C	D	E	F
8	9	-5	-8	5	-9

- 3** Adding a positive to a negative results in the difference between the two values but with the sign of the larger one

$$3 + -1 = ?$$

A	B	C	D	E
2	-1	1	4	-4

- 4** Subtracting a negative is the same as adding a positive. The first number is also positive, so this results in an even bigger positive.

$$2 - -1 = ?$$

A	B	C	D	E
3	1	-1	-5	5

- 5** Adding a positive to a negative results in the difference between the two values but with the sign of the larger one

$$-2 + 4 = ?$$

A	B	C	D	E	F
-2	6	-6	1	2	-1

- 6** Adding a positive to a negative results in the difference between the two values but with the sign of the larger one

$$2 + -2 = ?$$

A	B	C	D	E
-2	2	4	0	-4

- 7** Adding two negatives together makes an even bigger negative

$$-3 + -2 = ?$$

A	B	C	D	E	F
-1	1	5	-6	-5	6

- 8** Adding two negatives together makes an even bigger negative

$$-4 + -3 = ?$$

A	B	C	D	E	F
-9	1	-1	-6	-7	9