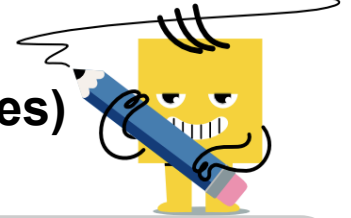




## Percent growth of money (10% multiples)



**1** Calculate the final amount when it changes by a percentage

100% more than \$40

|   |         |   |          |
|---|---------|---|----------|
| A | \$88.00 | B | \$72.00  |
| C | \$80.00 | D | \$52.00  |
| E | \$84.00 | F | \$108.00 |

**3** Calculate the final amount when it changes by a percentage

\$70 plus 50% interest

|   |          |   |          |
|---|----------|---|----------|
| A | \$105.00 | B | \$84.00  |
| C | \$120.75 | D | \$131.25 |
| E | \$141.75 | F | \$94.50  |

**5** Calculate the final amount when it changes by a percentage

50% more than \$60

|   |          |   |         |
|---|----------|---|---------|
| A | \$121.50 | B | \$54.00 |
| C | \$130.50 | D | \$90.00 |
| E | \$85.50  | F | \$72.00 |

**7** Calculate the final amount when it changes by a percentage

\$10 grows by 100%

|   |         |   |         |
|---|---------|---|---------|
| A | \$22.00 | B | \$20.00 |
| C | \$24.00 | D | \$21.00 |
| E | \$26.00 | F | \$17.00 |

**2** Calculate the final amount when it changes by a percentage

90% more than \$30

|   |         |   |         |
|---|---------|---|---------|
| A | \$65.55 | B | \$34.20 |
| C | \$74.10 | D | \$45.60 |
| E | \$28.50 | F | \$57.00 |

**4** Calculate the final amount when it changes by a percentage

\$90 plus 90% interest

|   |          |   |          |
|---|----------|---|----------|
| A | \$111.15 | B | \$171.00 |
| C | \$179.55 | D | \$136.80 |
| E | \$230.85 | F | \$196.65 |

**6** Calculate the final amount when it changes by a percentage

\$20 plus 100% interest

|   |         |   |         |
|---|---------|---|---------|
| A | \$26.00 | B | \$28.00 |
| C | \$40.00 | D | \$42.00 |
| E | \$44.00 | F | \$32.00 |

**8** Calculate the final amount when it changes by a percentage

Add 40% tip to \$100

|   |          |   |          |
|---|----------|---|----------|
| A | \$140.00 | B | \$196.00 |
| C | \$126.00 | D | \$161.00 |
| E | \$70.00  | F | \$189.00 |