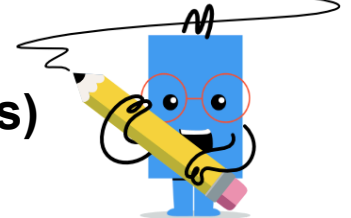




Percent growth of money (5% multiples)



1	Calculate the final amount when it changes by a percentage	A	\$80.50	B	\$115.00	2	Calculate the final amount when it changes by a percentage	A	\$93.50	B	\$110.00
	\$92 plus 25% interest	C	\$155.25	D	\$126.50		\$88 plus 25% interest	C	\$66.00	D	\$99.00
		E	\$161.00	F	\$63.25			E	\$71.50	F	\$88.00
3	Calculate the final amount when it changes by a percentage	A	\$15.00	B	\$36.00	4	Calculate the final amount when it changes by a percentage	A	\$38.50	B	\$26.25
	\$24 plus 25% interest	C	\$30.00	D	\$18.00		\$28 plus 25% interest	C	\$36.75	D	\$33.25
		E	\$22.50	F	\$33.00			E	\$35.00	F	\$47.25
5	Calculate the final amount when it changes by a percentage	A	\$20.00	B	\$30.00	6	Calculate the final amount when it changes by a percentage				
	\$32 plus 25% interest	C	\$50.00	D	\$40.00		\$56 grows by 25%				
		E	\$22.00	F	\$26.00		A	\$73.50	B	\$70.00	
		C	\$38.50	D	\$98.00						
		E	\$49.00	F	\$94.50						
7						8					
Calculate the final amount when it changes by a percentage						Calculate the final amount when it changes by a percentage					
25% more than \$68						\$48 grows by 25%					
A	\$51.00	B	\$119.00	A	\$57.00	B	\$48.00				
C	\$110.50	D	\$89.25	C	\$60.00	D	\$69.00				
E	\$85.00	F	\$72.25	E	\$39.00	F	\$87.00				