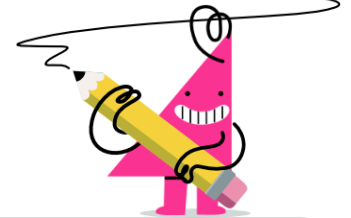




Percents to Fractions - Powers of Ten



1 Which fraction is the same as this percent? 10%	A $\frac{1}{1,000}$	B $\frac{1}{100}$	C $\frac{1}{10}$	2 Which fraction is the same as this percent? 6%	A $\frac{6}{10,000}$	B $\frac{6}{100}$	C $\frac{600}{100}$
	D $\frac{1}{10,000}$				D $\frac{6}{10}$		
3 Which fraction is the same as this percent? 3%	A $\frac{300}{100}$	B $\frac{3}{100}$	C $\frac{3}{1,000}$	4 Which fraction is the same as this percent? 20%	A $\frac{2}{10}$	B $\frac{2}{10}$	C $\frac{20,000}{10}$
	D $\frac{3}{10}$				D $\frac{2}{100}$	E $\frac{200}{10}$	
5 Which fraction is the same as this percent? 1%	A $\frac{1}{10,000}$	B $\frac{1,000}{100}$	C $\frac{1}{10}$	6 Which fraction is the same as this percent? 5%	A $\frac{50,000}{100}$	B $\frac{5}{100}$	C $\frac{5}{100,000}$
	D $\frac{1}{100}$	E $\frac{10,000}{100}$			D $\frac{5}{1,000}$		
7 Which fraction is the same as this percent? 60%	A $\frac{6}{10}$	B $\frac{60,000}{10}$	C $\frac{6}{100}$	8 Which fraction is the same as this percent? 2%	A $\frac{20,000}{100}$	B $\frac{2}{100,000}$	C $\frac{2}{10,000}$
	D $\frac{6}{10}$				D $\frac{2}{100}$		