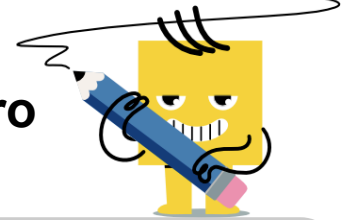
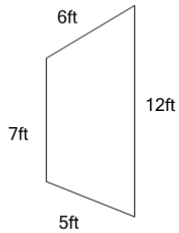


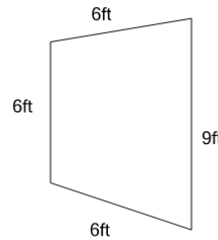


## Perimeter of a Trapezoid - Concept Intro

**1**

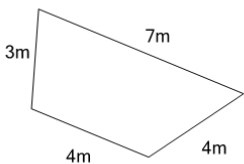
Find the total length of all 4 sides of this trapezoid

A	42ft	B	18ft
C	30ft	D	33ft
E	27ft	F	21ft

**2**

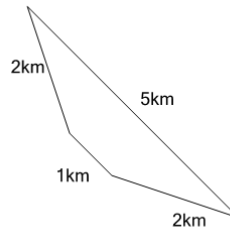
Find the total length of all 4 sides of this trapezoid

A	19ft	B	24ft
C	27ft	D	16ft
E	22ft	F	30ft

**3**

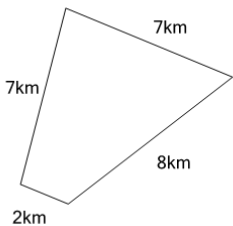
Find the total length of all 4 sides of this trapezoid

A	18m	B	9m
C	25m	D	22m
E	20m	F	11m

**4**

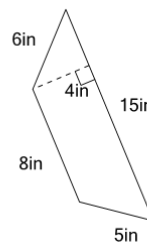
Find the total length of all 4 sides of this trapezoid

A	7km	B	9km
C	13km	D	10km
E	11km	F	14km

**5**

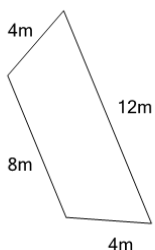
Find the total length of all 4 sides of this trapezoid

A	31km	B	14km
C	22km	D	12km
E	24km	F	17km

**6**

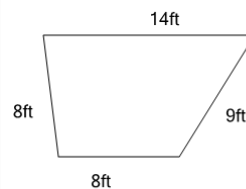
Find the total length of all 4 sides of this trapezoid

A	27in	B	44in
C	17in	D	48in
E	41in	F	34in

**7**

Find the total length of all 4 sides of this trapezoid

A	20m	B	28m
C	39m	D	14m
E	17m	F	22m

**8**

Find the total length of all 4 sides of this trapezoid

A	43ft	B	51ft
C	47ft	D	20ft
E	39ft	F	35ft