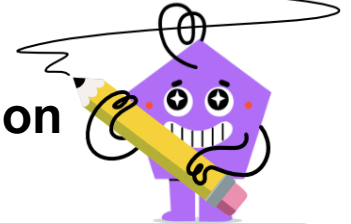
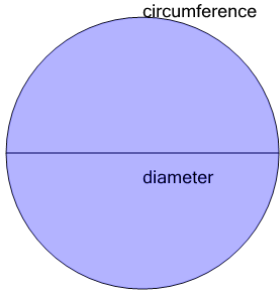


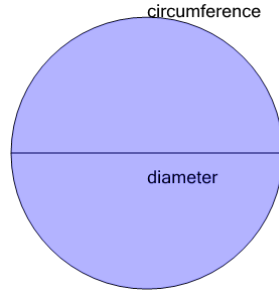


Pi - Circle Ratio to Integer Approximation

**1**

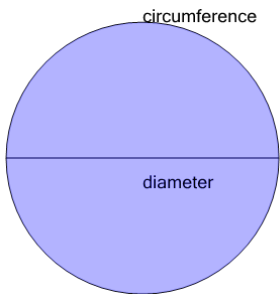
A circle's circumference is roughly how many times longer than its diameter?

A	0	B	1
C	22	D	17
E	15	F	3

2

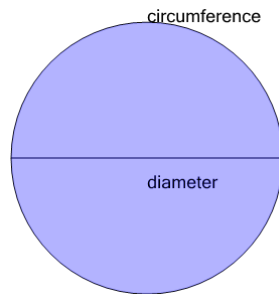
A circle's circumference is roughly how many times longer than its diameter?

A	2	B	9
C	1	D	3
E	21	F	22

3

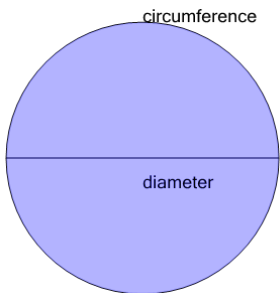
A circle's circumference is roughly how many times longer than its diameter?

A	3	B	6
C	1	D	9
E	14	F	2

4

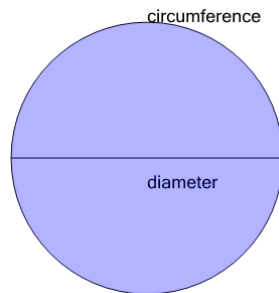
A circle's circumference is roughly how many times longer than its diameter?

A	8	B	1
C	2	D	13
E	22	F	3

5

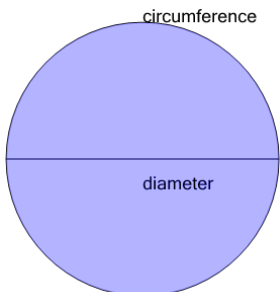
A circle's circumference is roughly how many times longer than its diameter?

A	15	B	1
C	20	D	0
E	7	F	3

6

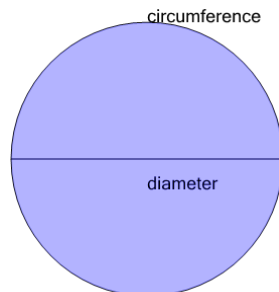
A circle's circumference is roughly how many times longer than its diameter?

A	19	B	0
C	3	D	11
E	12	F	4

7

A circle's circumference is roughly how many times longer than its diameter?

A	2	B	3
C	15	D	19
E	1	F	0

8

A circle's circumference is roughly how many times longer than its diameter?

A	2	B	12
C	3	D	0
E	14	F	15