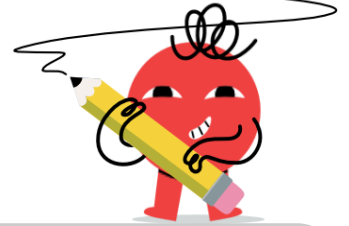




## Pi - Greek Letter to Number



**1**

What is the constant Pi ( $\pi$ ) approximately equal to?

$\pi$

A

3.14

B

-3.78

C

14.2

D

16.97

E

-16.22

F

-1.01

**2**

What is the constant Pi ( $\pi$ ) approximately equal to?

$\pi$

A

15.59

B

-5.16

C

3.14

D

25.27

E

-6.54

F

10.06

**3**

What is the constant Pi ( $\pi$ ) approximately equal to?

$\pi$

A

5.91

B

3.14

C

28.03

D

-5.16

E

21.12

F

19.74

**4**

What is the constant Pi ( $\pi$ ) approximately equal to?

$\pi$

A

8.67

B

-10.69

C

-14.84

D

-16.22

E

3.14

F

11.44

**5**

What is the constant Pi ( $\pi$ ) approximately equal to?

$\pi$

A

29.42

B

3.14

C

-14.84

D

-13.46

E

10.06

F

12.82