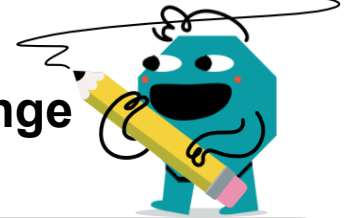




Quadratics Vertex Form - Vertex to Range



1 What is the range of a function with this vertex? (-3, -1), opening down	A $(-\infty, -3]$	B $[-1, -3]$	2 What is the range of a function with this vertex? (-2, 2), opening down	A $(-\infty, -2]$	B $(-\infty, -0.5]$
	C $(-\infty, -1]$	D $(-\infty, -0.5]$		C $(-\infty, 2]$	D $[-0.5, -2]$
3 What is the range of a function with this vertex? (-3, -1), opening up	A $[-1, \infty)$	B $[-1, -3]$	4 What is the range of a function with this vertex? (-4, -1), opening down	A $[-1, -4]$	B $(-\infty, -4]$
	C $[1, -3]$	D $(-\infty, -3]$		C $(-\infty, -1]$	
5 What is the range of a function with this vertex? (-4, 4), opening down	A $(-\infty, -4]$	B $[4, -4]$	6 What is the range of a function with this vertex? (3, -1), opening down	A $[-1, \infty)$	B $[-1, 3]$
	C $(-\infty, 4]$	D $[-4, \infty)$		C $(-\infty, -1]$	D $(-\infty, 3]$
7 What is the range of a function with this vertex? (1, 1), opening down	A $(-\infty, 1]$	B $[-0.5, 1]$	8 What is the range of a function with this vertex? (2, 2), opening up		
	C $[-0.5, \infty)$	D $[1, 1]$	A $[1.5, \infty)$	B $[2, 2]$	C $[1.5, 2]$
			D $[2, \infty)$		